

# Anti-CP43 subunit of Photosystem II, E-loop antibody

Catalog: PHY0365A

## Product Information

<b>Description:</b>	Rabbit polyclonal antibody
<b>Background:</b>	CP43 is a component of the proximal antenna of PSII and contains six transmembrane alpha helices and five hydrophilic loops that connect the membrane-spanning domains. CP43 is encoded by the <i>psbC</i> gene (ATCG00280).
<b>Synonyms:</b>	PsbC
<b>Immunogen:</b>	KLH-conjugated synthetic peptide (14 aa from Central section) derived from <i>Arabidopsis thaliana</i> E-loop of PsbC (ATCG00280).
<b>Form:</b>	Lyophilized
<b>Quantity:</b>	150 µg
<b>Purification:</b>	Immunogen affinity purified
<b>Reconstitution:</b>	Reconstitution with 150 µl of 0.01 M sterile PBS. "Note: please spin tube briefly prior to opening it to avoid any losses that might occur from lyophilized material adhering to the cap or sides of the tube".
<b>Stability &amp; Storage:</b>	Use a manual defrost freezer and avoid repeated freeze-thaw cycles. 12 months from date of receipt, -20 to -70°C as supplied. 6 months, -20 to -70°C under sterile conditions after reconstitution. 1 month, 2 to 8°C under sterile conditions after reconstitution.
<b>Shipping:</b>	The product is shipped at 4°C. Upon receipt, store it immediately at the temperature recommended above.

## Application Information

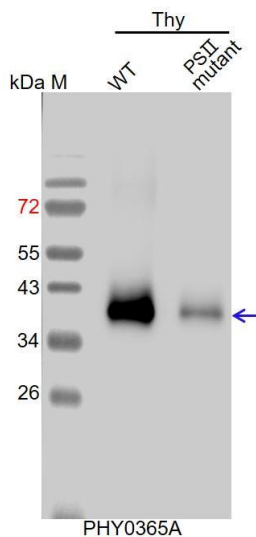
<b>Recommended Dilution:</b>	Western Blot (1:1000-1:5000) Note: Optimal dilutions/concentrations should be determined by the end user.
<b>Expected / apparent MW:</b>	52 / 40 kDa
<b>Confirmed Reactivity:</b>	<i>Arabidopsis thaliana</i>
<b>Predicted Reactivity:</b>	Among species analyzed, the sequence of the synthetic peptide used for immunization is 100% homologous with the sequence in <i>Brassica</i>

Research Use Only

*napus, Medicago truncatula, Glycine max, Solanum tuberosum, Brassica rapa, Sorghum bicolor, Zea mays, Triticum aestivum, Vitis vinifera, Nicotiana tabacum, Oryza sativa, Setaria viridis, Cucumis sativus, Solanum lycopersicum, Spinacia oleracea, Physcomitrium patens, Leymus chinensis, Panicum virgatum, Gossypium raimondii, Populus trichocarpa, Synechocystis sp. PCC 6803, Hordeum vulgare, Chlamydomonas reinhardtii, and 80-99% homologues with the sequence in Synechococcus elongatus PCC 7942.*

For more species homologues information, please contact tech support at [tech@phytoab.com](mailto:tech@phytoab.com).

## Application Example



**Thy-WT:** thylakoid membrane protein from WT of *Arabidopsis thaliana* containing 0.25 µg of chlorophyll.

**Thy-PS II mutant:** thylakoid membrane protein from an *Arabidopsis* mutant with low accumulation of PS II containing 0.25 µg of chlorophyll.

**Electrophoresis:** 15% SDS- PAGE

**Transfer:** blotting to NC (nitrocellulose) membrane for 1 h.

**Blocking:** 5% skim milk at RT or 4°C for 1 h.

**Primary antibody:** 1:5000 dilution overnight at 4°C.

**Secondary antibody:** 1:10000 dilution using Goat Anti-Rabbit IgG H&L (HRP) (Cat# PHY6000)

**Detection:** using chemiluminescence substrate and image were captured with CCD camera.