

Anti-PEP carboxy kinase, N-terminal antibody

Catalog: PHY0049A

Product Information

Description:	Rabbit polyclonal antibody
Background:	This protein is involved in the pathway gluconeogenesis, which is part of Carbohydrate biosynthesis.
Synonyms:	PEPCK, PEP carboxy kinase
Immunogen:	KLH-conjugated synthetic peptide (15 aa from N terminal section) derived from <i>Zea mays</i> PEPCK (Zm00001d028471).
Form:	Lyophilized
Quantity:	150 µg
Purification:	Immunogen affinity purified
Reconstitution:	Reconstitution with 150 µl of 0.01 M sterile PBS. "Note: please spin tube briefly prior to opening it to avoid any losses that might occur from lyophilized material adhering to the cap or sides of the tube".
Stability & Storage:	Use a manual defrost freezer and avoid repeated freeze-thaw cycles. 12 months from date of receipt, -20 to -70°C as supplied. 6 months, -20 to -70°C under sterile conditions after reconstitution. 1 month, 2 to 8°C under sterile conditions after reconstitution.
Shipping:	The product is shipped at 4°C. Upon receipt, store it immediately at the temperature recommended above.

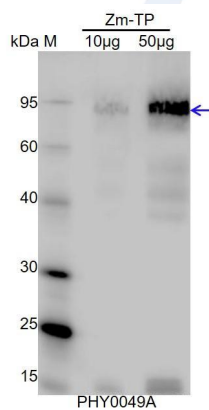
Application Information

Recommended Dilution:	Western Blot (1:1000-1:2000) Note: Optimal dilutions/concentrations should be determined by the end user.
Expected / apparent MW:	73 / 85 kDa
Confirmed Reactivity:	<i>Zea mays</i>
Predicted Reactivity:	Among species analyzed, the sequence of the synthetic peptide used for immunization is 80-99% homologues with the sequence in <i>Sorghum bicolor</i> , <i>Setaria viridis</i> . For more species homologues information, please contact tech

Research Use Only

support at tech@phytoab.com.

Application Example



Zm-TP: 10 µg and 50 µg total protein from *Zea mays* leaf.

Electrophoresis: 15% SDS-Urea-PAGE

Transfer: blotting to NC (nitrocellulose) membrane for 1 h.

Blocking: 5% skim milk at RT or 4°C for 1 h.

Primary antibody: 1:2000 dilution overnight at 4°C.

Secondary antibody: 1:20000 dilution using Goat Anti-Rabbit IgG H&L (HRP) (Cat# PHY6000).

Detection: using chemiluminescence substrate and image were captured with CCD camera.