

Anti-RELATED TO UBIQUITIN 1/2 antibody

Catalog: PHY0755A

Product Information

Description:	Rabbit polyclonal antibody
Background:	RELATED TO UBIQUITIN 1 (RUB1, AT1G31340) and RUB2 (AT2G35635) are redundant and both proteins are essential for early embryonic cell divisions. In addition, RUB3 (AT1G11980) may function as a stable post-translational protein modifier.
Synonyms:	RELATED TO UBIQUITIN 1/2, RUB1/2
Immunogen:	KLH-conjugated synthetic peptide (15 aa from Central section) derived from <i>Arabidopsis thaliana</i> of RUB1 (AT1G31340), RUB2 (AT2G35635).
Form:	Lyophilized
Quantity:	150 µg
Purification:	Immunogen affinity purified
Reconstitution:	Reconstitution with 150 µl of 0.01 M sterile PBS. "Note: please spin tube briefly prior to opening it to avoid any losses that might occur from lyophilized material adhering to the cap or sides of the tube".
Stability & Storage:	Use a manual defrost freezer and avoid repeated freeze-thaw cycles. 12 months from date of receipt, -20 to -70°C as supplied. 6 months, -20 to -70°C under sterile conditions after reconstitution. 1 month, 2 to 8°C under sterile conditions after reconstitution.
Shipping:	The product is shipped at 4°C. Upon receipt, store it immediately at the temperature recommended above.

Application Information

Recommended Dilution:	Western Blot (1:1000-1:2000) Note: Optimal dilutions/concentrations should be determined by the end user.
Expected / apparent MW:	17 kDa
Confirmed Reactivity:	Coming soon
Predicted Reactivity:	Among species analyzed, the sequence of the synthetic peptide used for immunization is 100% homologous with the sequence in <i>Solanum</i>

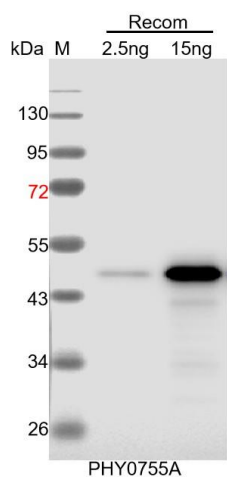
Research Use Only

tuberosum, *Gossypium raimondii*, *Oryza sativa*, *Zea mays*, *Medicago truncatula*, *Hordeum vulgare*, *Triticum aestivum*, *Brassica napus*, *Panicum virgatum*, *Spinacia oleracea*, *Brassica rapa*, *Vitis vinifera*, *Populus trichocarpa*, *Nicotiana tabacum*, *Glycine max*, *Cucumis sativus*, *Solanum lycopersicum*, *Sorghum bicolor*, and 80-99% homologues with the sequence in *Physcomitrella patens*, *Chlamydomonas reinhardtii*.

The sequence of the synthetic peptide used for immunization is 87% homologues with the sequence in RUB3 (AT1G11980).

For more species homologues information, please contact tech support at tech@phytoab.com.

Application Example



Recom: 2.5 ng and 15 ng recombinant protein containing the peptide for immunization and having a molecular mass of 49 kDa.

Electrophoresis: 12% SDS-PAGE

Transfer: blotting to NC (nitrocellulose) membrane for 1 h.

Blocking: 5% skim milk at RT or 4°C for 1 h.

Primary antibody: 1:1000 dilution overnight at 4°C.

Secondary antibody: 1:10000 dilution using Goat Anti-Rabbit IgG H&L (HRP) (Cat# PHY6000)

Detection: using chemiluminescence substrate and image were captured with CCD camera.