

Anti-Telomerase reverse transcriptase antibody

Catalog: PHY1803A

Product Information

Description:	Rabbit polyclonal antibody
Background:	TERT is a catalytic subunit of telomerase reverse transcriptase. Involved in telomere homeostasis. Homozygous double mutants with ATR show gross morphological defects over a period of generations. TERT shows Class II telomerase activity in vitro, indicating that it can initiate de novo telomerase synthesis on non-telomeric DNA, often using a preferred position within the telomerase-bound RNA. Loss of function mutants have reduced telomere length in roots and over a period of generations, decreasing root meristem function.
Synonyms:	TERT, ATTERT, TELOMERASE REVERSE TRANSCRIPTASE
Immunogen:	KLH-conjugated synthetic peptide (23 aa from N terminal section) derived from <i>Arabidopsis thaliana</i> TERT (AT5G16850).
Form:	Lyophilized
Quantity:	150 µg
Purification:	Immunogen affinity purified
Reconstitution:	Reconstitution with 150 µl of 0.01 M sterile PBS. "Note: please spin tube briefly prior to opening it to avoid any losses that might occur from lyophilized material adhering to the cap or sides of the tube".
Stability & Storage:	Use a manual defrost freezer and avoid repeated freeze-thaw cycles. 12 months from date of receipt, -20 to -70°C as supplied. 6 months, -20 to -70°C under sterile conditions after reconstitution. 1 month, 2 to 8°C under sterile conditions after reconstitution.
Shipping:	The product is shipped at 4°C. Upon receipt, store it immediately at the temperature recommended above.

Application Information

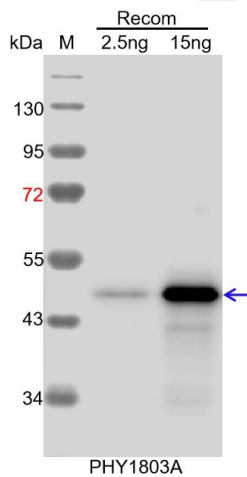
Recommended Dilution:	Western Blot (1:1000-1:2000) Note: Optimal dilutions/concentrations should be determined by the end user.
Expected / apparent MW:	131 kDa

Research Use Only

Confirmed Reactivity: Coming soon

Predicted Reactivity: For more species homologues information, please contact tech support at tech@phytoab.com.

Application Example



Recom: 2.5 ng and 15 ng recombinant protein containing the peptide for immunization and having a molecular mass of 49 kDa.

Electrophoresis: 12% SDS-PAGE

Transfer: blotting to NC (nitrocellulose) membrane for 1 h.

Blocking: 5% skim milk at RT or 4°C for 1 h.

Primary antibody: 1:1000 dilution overnight at 4°C.

Secondary antibody: 1:10000 dilution using Goat Anti-Rabbit IgG H&L (HRP) (Cat# PHY6000)

Detection: using chemiluminescence substrate and image were captured with CCD camera.