

# Anti-Hypoxia-responsive family protein, C-terminal antibody

Catalog: PHY0582S

## Product Information

|                                 |   |
|---------------------------------|---|
| <b>Description:</b>             | Rabbit polyclonal antibody  |
| <b>Background:</b>              | Cytochrome c oxidase is the last enzyme in the respiratory electron transport chain of mitochondria and it is also called Complex IV. Cytochrome c oxidase receives an electron from each of four cytochrome c molecules, and transfers them to one oxygen molecule, converting molecular oxygen to two molecules of water. In higher plants mitochondria, Complex IV processes 14 subunits. COX X1 (AT5G27760/AT3G05550) is one subunit of the Complex IV. |
| <b>Synonyms:</b>                | COX X1  |
| <b>Immunogen:</b>               | KLH-conjugated synthetic peptide (15 aa from C terminal section) derived from <i>Arabidopsis thaliana</i> COX X1 (AT5G27760).   |
| <b>Form:</b>                    | Lyophilized   |
| <b>Quantity:</b>                | 150 µg  |
| <b>Purification:</b>            | Serum<br>Peptide affinity form antibody available upon request at <a href="mailto:info@phytoab.com">info@phytoab.com</a> .  |
| <b>Reconstitution:</b>          | Reconstitution with 150 µl of sterile water.<br>"Note: please spin tube briefly prior to opening it to avoid any losses that might occur from lyophilized material adhering to the cap or sides of the tube".   |
| <b>Stability &amp; Storage:</b> | Use a manual defrost freezer and avoid repeated freeze-thaw cycles.<br>12 months from date of receipt, -20 to -70°C as supplied.<br>6 months, -20 to -70°C under sterile conditions after reconstitution.<br>1 month, 2 to 8°C under sterile conditions after reconstitution.   |
| <b>Shipping:</b>                | The product is shipped at 4°C. Upon receipt, store it immediately at the temperature recommended above.   |

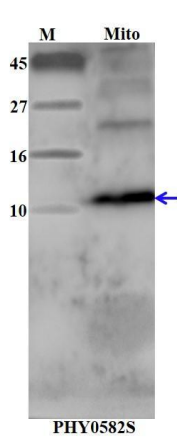
## Application Information

|                              |  |
|------------------------------|--|
| <b>Recommended Dilution:</b> | Western Blot (1:1000-1:2000)<br>Note: Optimal dilutions/concentrations should be determined by the end user. |
|------------------------------|--|

Research Use Only

|                                |  |
|--------------------------------|--|
| <b>Expected / apparent MW:</b> | 11 kDa   |
| <b>Confirmed Reactivity:</b>   | Coming soon  |
| <b>Predicted Reactivity:</b>   | Among species analyzed, the sequence of the synthetic peptide used for immunization is 80-99% homologues with the sequence in <i>Brassica napus</i> , <i>Brassica rapa</i> .<br>For more species homologues information, please contact tech support at <a href="mailto:tech@phytoab.com">tech@phytoab.com</a> . |

## Application Example



Mito: 10 µg mitochondria protein from *Arabidopsis thaliana*.

**Electrophoresis:** Tricine-SDS-PAGE

**Transfer:** blotting to NC (nitrocellulose) membrane for 1 h.

**Blocking:** 5% skim milk at RT or 4°C for 1 h.

**Primary antibody:** 1:1000 dilution overnight at 4°C.

**Secondary antibody:** 1:10000 dilution using Goat Anti-Rabbit IgG H&L (HRP) (Cat# PHY6000).

**Detection:** using chemiluminescence substrate and image were captured with CCD camera.