

Anti-Lhcb3 protein of LHCII antibody

Catalog: PHY3435S

Product Information

Description:	Rabbit polyclonal antibody
Background:	The light-harvesting complex (LHC) functions as a light receptor; it captures and delivers excitation energy to photosystem. Lhcb3 protein is a component of the main light harvesting chlorophyll a/b-protein complex of Photosystem II (LHC II).
Synonyms:	Lhcb3, LHCB3, LHCB3*1, LIGHT-HARVESTING CHLOROPHYLL B-BINDING PROTEIN 3
Immunogen:	KLH-conjugated synthetic peptide (14 aa from N terminal section) derived from <i>Arabidopsis thaliana</i> Lhcb3 (AT5G54270).
Form:	Lyophilized
Quantity:	150 µg
Purification:	Serum Peptide affinity form antibody available upon request at info@phytoab.com .
Reconstitution:	Reconstitution with 150 µl of sterile water. "Note: please spin tube briefly prior to opening it to avoid any losses that might occur from lyophilized material adhering to the cap or sides of the tube".
Stability & Storage:	Use a manual defrost freezer and avoid repeated freeze-thaw cycles. 12 months from date of receipt, -20 to -70°C as supplied. 6 months, -20 to -70°C under sterile conditions after reconstitution. 1 month, 2 to 8°C under sterile conditions after reconstitution.
Shipping:	The product is shipped at 4°C. Upon receipt, store it immediately at the temperature recommended above.

Application Information

Recommended Dilution:	Western Blot (1:1000-1:2000) Note: Optimal dilutions/concentrations should be determined by the end user.
Expected / apparent MW:	29 / 25 kDa
Confirmed Reactivity:	<i>Arabidopsis thaliana</i>

Research Use Only

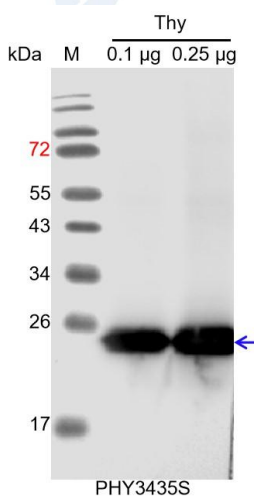
Predicted Reactivity:

Among species analyzed, the sequence of the synthetic peptide used for immunization is 100% homologues with the sequence in *Glycine max*, *Solanum lycopersicum*, *Brassica napus*, *Brassica rapa*, *Solanum tuberosum*, *Nicotiana tabacum*, *Medicago truncatula*, *Cucumis sativus*, *Populus trichocarpa*, and 80-99% homologues with the sequence in *Oryza sativa*, *Zea mays*, *Vitis vinifera*, *Triticum aestivum*, *Setaria viridis*, *Panicum virgatum*, *Sorghum bicolor*, *Hordeum vulgare*, *Spinacia oleracea*, *Gossypium raimondii*, *Physcomitrium patens*.

The sequence of the synthetic peptide used for immunization is 86% homologues with the sequence in LHCB2.1 (AT2G05100), LHCB2.2 (AT2G05070) and LHCB2.3 (AT3G27690).

For more species homologues information, please contact tech support at tech@phytoab.com.

Application Example



Thy: thylakoid membrane protein from *Arabidopsis thaliana* containing 0.1 µg, and 0.25 µg of chlorophyll, respectively.

Electrophoresis: 15% SDS-PAGE.

Transfer: blotting to NC (nitrocellulose) membrane for 1h.

Blocking: 5% skim milk at RT or 4°C for 1h.

Primary antibody: 1:2000 dilution overnight at 4°C.

Secondary antibody: 1:10000 dilution using Goat Anti-Rabbit IgG H&L (HRP) (Cat# PHY6000).

Detection: using chemiluminescence substrate and image were captured with CCD camera.