

# Anti-Potassium channel SKOR antibody

Catalog: PHY2447A

## Product Information

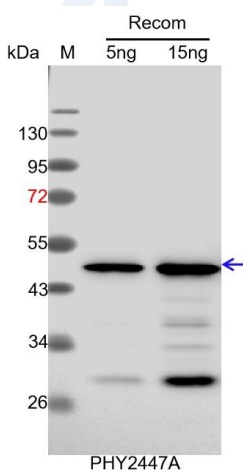
<b>Description:</b>	Rabbit polyclonal antibody
<b>Background:</b>	SKOR is a member of Shaker family potassium ion (K <sup>+</sup> ) channel. This family includes five groups based on phylogenetic analysis (FEBS Letters (2007) 581: 2357): I (inward rectifying channel): AKT1 (AT2G26650), AKT5 (AT4G32500) and SPIK (also known as AKT6, AT2G25600); II (inward rectifying channel): KAT1 (AT5G46240) and KAT2 (AT4G18290); III (weakly inward rectifying channel): AKT2 (AT4G22200); IV (regulatory subunit involved in inwardly rectifying conductance formation): KAT3 (also known as AtKC1, AT4G32650); V (outward rectifying channel): SKOR (AT3G02850) and GORK (AT5G37500). Mediates the delivery of K <sup>+</sup> from stelar cells to the xylem in the roots towards the shoot. mRNA accumulation is modulated by abscisic acid. K <sup>+</sup> gating activity is modulated by external and internal K <sup>+</sup> . Involved in response to low potassium.
<b>Synonyms:</b>	SKOR, STELAR K <sup>+</sup> OUTWARD RECTIFIER
<b>Immunogen:</b>	KLH-conjugated synthetic peptide (16 aa from C terminal section) derived from <i>Arabidopsis thaliana</i> SKOR (AT3G02850).
<b>Form:</b>	Lyophilized
<b>Quantity:</b>	150 µg
<b>Purification:</b>	Immunogen affinity purified
<b>Reconstitution:</b>	Reconstitution with 150 µl of 0.01 M sterile PBS. "Note: please spin tube briefly prior to opening it to avoid any losses that might occur from lyophilized material adhering to the cap or sides of the tube".
<b>Stability &amp; Storage:</b>	Use a manual defrost freezer and avoid repeated freeze-thaw cycles. 12 months from date of receipt, -20 to -70°C as supplied. 6 months, -20 to -70°C under sterile conditions after reconstitution. 1 month, 2 to 8°C under sterile conditions after reconstitution.
<b>Shipping:</b>	The product is shipped at 4°C. Upon receipt, store it immediately at the temperature recommended above.

## Application Information

Research Use Only

- Recommended Dilution:** Western Blot (1:1000-1:2000)  
 Note: Optimal dilutions/concentrations should be determined by the end user.
- Expected / apparent MW:** 94 kDa
- Confirmed Reactivity:** Coming soon
- Predicted Reactivity:** Among species analyzed, the sequence of the synthetic peptide used for immunization is 80-99% homologues with the sequence in *Brassica rapa*, *Brassica napus*, *Nicotiana tabacum*, *Populus trichocarpa*, *Vitis vinifera*, *Solanum tuberosum*, *Solanum lycopersicum*, *Spinacia oleracea*, *Gossypium raimondii*, *Cucumis sativus*, *Glycine max*.  
 For more species homologues information, please contact tech support at [tech@phytoab.com](mailto:tech@phytoab.com).

## Application Example



Recom: 5 ng and 15 ng recombinant protein containing the peptide for immunization and having a molecular mass of 50 kDa.

**Electrophoresis:** 12% SDS-PAGE.

**Transfer:** blotting to NC (nitrocellulose) membrane for 1h.

**Blocking:** 5% skim milk at RT or 4°C for 1h.

**Primary antibody:** 1:1000 dilution overnight at 4°C.

**Secondary antibody:** 1:10000 dilution using Goat Anti-Rabbit IgG H&L (HRP) (Cat# PHY6000).

**Detection:** using chemiluminescence substrate and image were captured with CCD camera.