

Anti-Anaphase-promoting complex subunit 2, C-terminal antibody

Catalog: PHY0905A

Product Information

Description:	Rabbit polyclonal antibody
Background:	APC2 is a highly conserved ubiquitin-protein ligase involved in cell cycle regulation. And it's a component of the anaphase promoting complex/cyclosome (APC/C), a cell cycle-regulated E3 ubiquitin-protein ligase complex that controls progression through mitosis and the G1 phase of the cell cycle. The APC/C complex controls several key steps in the cell cycle by mediating ubiquitination and subsequent degradation of target proteins such as cyclins.
Synonyms:	APC2, ANAPHASE-PROMOTING COMPLEX/CYCLOSOME 2
Immunogen:	KLH-conjugated synthetic peptide (14 aa from C terminal section) derived from <i>Arabidopsis thaliana</i> APC2 (AT2G04660).
Form:	Lyophilized
Quantity:	150 µg
Purification:	Immunogen affinity purified
Reconstitution:	Reconstitution with 150 µl of 0.01 M sterile PBS. "Note: please spin tube briefly prior to opening it to avoid any losses that might occur from lyophilized material adhering to the cap or sides of the tube".
Stability & Storage:	Use a manual defrost freezer and avoid repeated freeze-thaw cycles. 12 months from date of receipt, -20 to -70°C as supplied. 6 months, -20 to -70°C under sterile conditions after reconstitution. 1 month, 2 to 8°C under sterile conditions after reconstitution.
Shipping:	The product is shipped at 4°C. Upon receipt, store it immediately at the temperature recommended above.

Application Information

Recommended Dilution:	Western Blot (1:1000-1:2000) Note: Optimal dilutions/concentrations should be determined by the end user.
------------------------------	--

Research Use Only

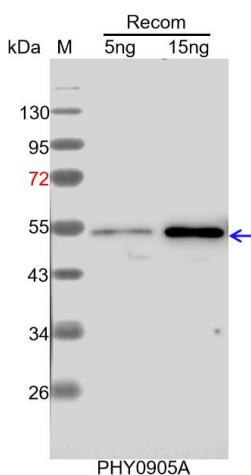
Expected / apparent MW: 98 kDa

Confirmed Reactivity: Coming soon

Predicted Reactivity: Among species analyzed, the sequence of the synthetic peptide used for immunization is 100% homologues with the sequence in *Brassica rapa*, *Brassica napus*, and 80-99% homologues with the sequence in *Glycine max*, *Vitis vinifera*, *Solanum tuberosum*, *Medicago truncatula*, *Solanum lycopersicum*, *Gossypium raimondii*, *Nicotiana tabacum*, *Populus trichocarpa*, *Spinacia oleracea*, *Zea mays*, *Panicum virgatum*, *Cucumis sativus*, *Setaria viridis*, *Sorghum bicolor*, *Oryza sativa*.

For more species homologues information, please contact tech support at tech@phytoab.com.

Application Example



Recom: 5 ng and 15 ng recombinant protein containing the peptide for immunization and having a molecular mass of 55 kDa.

Electrophoresis: 12% SDS-PAGE.

Transfer: blotting to NC (nitrocellulose) membrane for 1h.

Blocking: 5% skim milk at RT or 4°C for 1h.

Primary antibody: 1:1000 dilution overnight at 4°C.

Secondary antibody: 1:10000 dilution using Goat Anti-Rabbit IgG H&L (HRP) (Cat# PHY6000).

Detection: using chemiluminescence substrate and image were captured with CCD camera.