

Anti-Vacuolar-processing enzyme beta-isozyme antibody

Catalog: PHY3149A

Product Information

Description:	Rabbit polyclonal antibody
Background:	β VPE is belonging to a novel group of cysteine proteases that is expressed specifically in seeds and is essential for the proper processing of storage proteins. In Arabidopsis, the VPE family has been described as having three members (α VPE (AT2G25940), β VPE (AT1G62710), and γ VPE (AT4G32940)).
Synonyms:	β VPE, AEP2, ASPARAGINYL ENDOPEPTIDASE 2, BETA VACUOLAR PROCESSING ENZYME, BETA-VPE, BETAVPE, LEGBETA, VACUOLAR PROCESSING ENZYME (VPE, LEGUMAIN) ISOFORM BETA
Immunogen:	KLH-conjugated synthetic peptide (17 aa from N terminal section) derived from <i>Arabidopsis thaliana</i> β VPE (AT1G62710).
Form:	Lyophilized
Quantity:	150 μ g
Purification:	Immunogen affinity purified
Reconstitution:	Reconstitution with 150 μ l of 0.01 M sterile PBS. "Note: please spin tube briefly prior to opening it to avoid any losses that might occur from lyophilized material adhering to the cap or sides of the tube".
Stability & Storage:	Use a manual defrost freezer and avoid repeated freeze-thaw cycles. 12 months from date of receipt, -20 to -70°C as supplied. 6 months, -20 to -70°C under sterile conditions after reconstitution. 1 month, 2 to 8°C under sterile conditions after reconstitution.
Shipping:	The product is shipped at 4°C. Upon receipt, store it immediately at the temperature recommended above.

Application Information

Recommended Dilution:	Western Blot (1:1000-1:2000) Note: Optimal dilutions/concentrations should be determined by the end user.
Expected / apparent MW:	54 kDa

Research Use Only

Confirmed Reactivity:

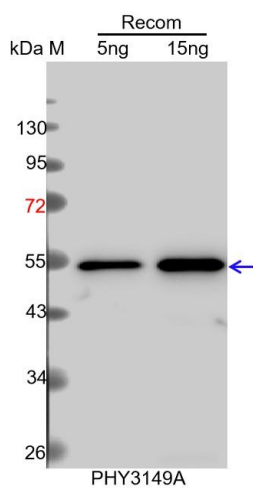
Coming soon

Predicted Reactivity:

Among species analyzed, the sequence of the synthetic peptide used for immunization is 100% homologues with the sequence in *Brassica napus*, and 80-99% homologues with the sequence in *Brassica rapa*, *Vitis vinifera*, *Gossypium raimondii*, *Populus trichocarpa*, *Spinacia oleracea*, *Zea mays*, *Setaria viridis*, *Hordeum vulgare*, *Triticum aestivum*, *Panicum virgatum*, *Sorghum bicolor*, *Cucumis sativus*, *Solanum lycopersicum*, *Solanum tuberosum*, *Glycine max*, *Oryza sativa*.

For more species homologues information, please contact tech support at tech@phytoab.com.

Application Example



Recom: 5 ng and 15 ng recombinant protein containing the peptide for immunization and having a molecular mass of 55 kDa.

Electrophoresis: 12% SDS-PAGE.

Transfer: blotting to NC (nitrocellulose) membrane for 1h.

Blocking: 5% skim milk at RT or 4°C for 1h.

Primary antibody: 1:1000 dilution overnight at 4°C.

Secondary antibody: 1:10000 dilution using Goat Anti-Rabbit IgG H&L (HRP) (Cat# PHY6000).

Detection: using chemiluminescence substrate and image were captured with CCD camera.