

Anti-Proteasome subunit alpha type-4-A antibody

Catalog: PHY2475A

Product Information

Description:	Rabbit polyclonal antibody
Background:	PAC1 is an alpha-3 subunit of 20s proteasome. The proteasome is a multicatalytic proteinase complex which is characterized by its ability to cleave peptides with Arg, Phe, Tyr, Leu, and Glu adjacent to the leaving group at neutral or slightly basic pH.
Synonyms:	PAC1, 20S PROTEASOME ALPHA SUBUNIT C1
Immunogen:	KLH-conjugated synthetic peptide (16 aa from Central section) derived from <i>Arabidopsis thaliana</i> PAC1 (AT3G22110).
Form:	Lyophilized
Quantity:	150 µg
Purification:	Immunogen affinity purified
Reconstitution:	Reconstitution with 150 µl of 0.01 M sterile PBS. "Note: please spin tube briefly prior to opening it to avoid any losses that might occur from lyophilized material adhering to the cap or sides of the tube".
Stability & Storage:	Use a manual defrost freezer and avoid repeated freeze-thaw cycles. 12 months from date of receipt, -20 to -70°C as supplied. 6 months, -20 to -70°C under sterile conditions after reconstitution. 1 month, 2 to 8°C under sterile conditions after reconstitution.
Shipping:	The product is shipped at 4°C. Upon receipt, store it immediately at the temperature recommended above.

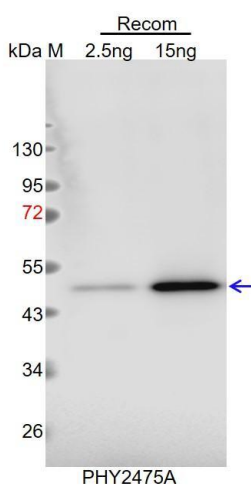
Application Information

Recommended Dilution:	Western Blot (1:1000-1:2000) Note: Optimal dilutions/concentrations should be determined by the end user.
Expected / apparent MW:	27 kDa
Confirmed Reactivity:	Coming soon
Predicted Reactivity:	Among species analyzed, the sequence of the synthetic peptide used for immunization is 100% homologues with the sequence in <i>Glycine max</i> , <i>Brassica napus</i> , <i>Brassica rapa</i> , <i>Solanum tuberosum</i> , <i>Medicago</i>

Research Use Only

truncatula, Zea mays, Physcomitrium patens, Populus trichocarpa, Spinacia oleracea, Setaria viridis, Gossypium raimondii, Triticum aestivum, Vitis vinifera, Sorghum bicolor, Oryza sativa, Panicum virgatum, Cucumis sativus, Nicotiana tabacum, Solanum lycopersicum, and 80-99% homologues with the sequence in *Chlamydomonas reinhardtii, Physcomitrium patens*.
For more species homologues information, please contact tech support at tech@phytoab.com.

Application Example



Recom: 2.5 ng and 15 ng recombinant protein containing the peptide for immunization and having a molecular mass of 47 kDa.

Electrophoresis: 12% SDS-PAGE.

Transfer: blotting to NC (nitrocellulose) membrane for 1h.

Blocking: 5% skim milk at RT or 4°C for 1h.

Primary antibody: 1:1000 dilution overnight at 4°C.

Secondary antibody: 1:10000 dilution using Goat Anti-Rabbit IgG H&L (HRP) (Cat# PHY6000).

Detection: using chemiluminescence substrate and image were captured with CCD camera.