

# Anti-Abscisic acid receptor PYL2 antibody

Catalog: PHY3385A

## Product Information

<b>Description:</b>	Rabbit polyclonal antibody
<b>Background:</b>	PYL2 encodes a member of the PYR (pyrabactin resistance )/PYL(PYR1-like)/RCAR (regulatory components of ABA receptor) family proteins with 14 members. PYR/PYL/RCAR family proteins function as abscisic acid sensors. Mediate ABA-dependent regulation of protein phosphatase 2Cs ABI1 and ABI2.
<b>Synonyms:</b>	PYL2, PYR1-LIKE 2, RCAR14, REGULATORY COMPONENTS OF ABA RECEPTOR 14
<b>Immunogen:</b>	KLH-conjugated synthetic peptide (13 aa from Central section) derived from <i>Arabidopsis thaliana</i> PYL2 (AT2G26040).
<b>Form:</b>	Lyophilized
<b>Quantity:</b>	150 µg
<b>Purification:</b>	Immunogen affinity purified
<b>Reconstitution:</b>	Reconstitution with 150 µl of 0.01 M sterile PBS. "Note: please spin tube briefly prior to opening it to avoid any losses that might occur from lyophilized material adhering to the cap or sides of the tube".
<b>Stability &amp; Storage:</b>	Use a manual defrost freezer and avoid repeated freeze-thaw cycles. 12 months from date of receipt, -20 to -70°C as supplied. 6 months, -20 to -70°C under sterile conditions after reconstitution. 1 month, 2 to 8°C under sterile conditions after reconstitution.
<b>Shipping:</b>	The product is shipped at 4°C. Upon receipt, store it immediately at the temperature recommended above.

## Application Information

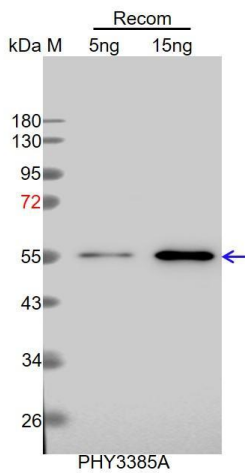
<b>Recommended Dilution:</b>	Western Blot (1:1000-1:2000) Note: Optimal dilutions/concentrations should be determined by the end user.
<b>Expected / apparent MW:</b>	21 kDa
<b>Confirmed Reactivity:</b>	Coming soon
<b>Predicted Reactivity:</b>	Among species analyzed, the sequence of the synthetic peptide used for immunization is 80-99% homologues with the sequence in <i>Brassica</i>

Research Use Only

*rapa, Brassica napus.*

For more species homologues information, please contact tech support at [tech@phytoab.com](mailto:tech@phytoab.com).

## Application Example



Recom: 5 ng and 15 ng recombinant protein containing the peptide for immunization and having a molecular mass of 55 kDa.

**Electrophoresis:** 12% SDS-PAGE.

**Transfer:** blotting to NC (nitrocellulose) membrane for 1h.

**Blocking:** 5% skim milk at RT or 4°C for 1h.

**Primary antibody:** 1:1000 dilution overnight at 4°C.

**Secondary antibody:** 1:10000 dilution using Goat Anti-Rabbit IgG H&L (HRP) (Cat# PHY6000).

**Detection:** using chemiluminescence substrate and image were captured with CCD camera.