

# Anti-Plasma membrane-associated cation-binding protein 1, N-terminal antibody

Catalog: PHY2387A

## Product Information

<b>Description:</b>	Rabbit polyclonal antibody
<b>Background:</b>	PCAP1 may be involved in intracellular signaling through interaction with PtdInsPs and calmodulin (CaM); it may keep PtdInsPs attached to the plasma membrane until Ca <sup>2+</sup> -CaM reaches a competitive concentration subsequent to an increase triggered by a stimulus, thus leading to PtdInsPs release and subsequent activation of InsPs-dependent signaling cascade.
<b>Synonyms:</b>	PCAP1, ARABIDOPSIS THALIANA PLASMA-MEMBRANE ASSOCIATED CATION-BINDING PROTEIN 1, ATPCAP1, MDP25, MICROTUBULE-DESTABILIZING PROTEIN 25, PLASMA-MEMBRANE ASSOCIATED CATION-BINDING PROTEIN 1
<b>Immunogen:</b>	KLH-conjugated synthetic peptide (13 aa from N terminal section) derived from <i>Arabidopsis thaliana</i> PCAP1 (AT4G20260).
<b>Form:</b>	Lyophilized
<b>Quantity:</b>	150 µg
<b>Purification:</b>	Immunogen affinity purified
<b>Reconstitution:</b>	Reconstitution with 150 µl of 0.01 M sterile PBS. "Note: please spin tube briefly prior to opening it to avoid any losses that might occur from lyophilized material adhering to the cap or sides of the tube".
<b>Stability &amp; Storage:</b>	Use a manual defrost freezer and avoid repeated freeze-thaw cycles. 12 months from date of receipt, -20 to -70°C as supplied. 6 months, -20 to -70°C under sterile conditions after reconstitution. 1 month, 2 to 8°C under sterile conditions after reconstitution.
<b>Shipping:</b>	The product is shipped at 4°C. Upon receipt, store it immediately at the temperature recommended above.

## Application Information

<b>Recommended Dilution:</b>	Western Blot (1:1000-1:2000) Note: Optimal dilutions/concentrations should be determined by the end user.
------------------------------	--

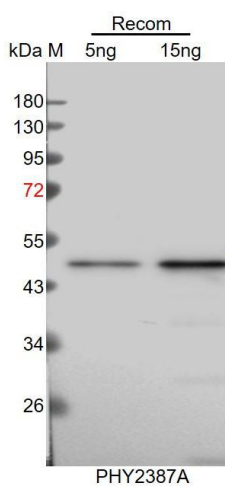
Research Use Only

**Expected / apparent MW:** 25 kDa

**Confirmed Reactivity:** Coming soon

**Predicted Reactivity:** Among species analyzed, the sequence of the synthetic peptide used for immunization is 100% homologues with the sequence in *Brassica napus*, *Brassica rapa*.  
For more species homologues information, please contact tech support at [tech@phytoab.com](mailto:tech@phytoab.com).

## Application Example



Recom: 5 ng and 15 ng recombinant protein containing the peptide for immunization and having a molecular mass of 50 kDa.

**Electrophoresis:** 12% SDS-PAGE.

**Transfer:** blotting to NC (nitrocellulose) membrane for 1h.

**Blocking:** 5% skim milk at RT or 4°C for 1h.

**Primary antibody:** 1:1000 dilution overnight at 4°C.

**Secondary antibody:** 1:10000 dilution using Goat Anti-Rabbit IgG H&L (HRP) (Cat# PHY6000).

**Detection:** using chemiluminescence substrate and image were captured with CCD camera.