

Anti-Protein FREE1, C-terminal antibody

Catalog: PHY3357A

Product Information

| | |
|---------------------------------|---|
| Description: | Rabbit polyclonal antibody |
| Background: | FREE1 is localized to the peripheral membrane of late endosomal compartments. Involved in the regulation of multivesicular/prevacuolar compartment protein sorting. Loss of function mutations are embryo lethal. Regulates IRT1-dependent metal transport and metal homeostasis. |
| Synonyms: | FYVE1, FREE1, FYVE DOMAIN PROTEIN REQUIRED FOR ENDOSOMAL SORTING 1, FYVE-DOMAIN PROTEIN 1, PDE330, PIGMENT DEFECTIVE EMBRYO 330 |
| Immunogen: | KLH-conjugated synthetic peptide (16 aa from C terminal section) derived from <i>Arabidopsis thaliana</i> FYVE1 (AT1G20110). |
| Form: | Lyophilized |
| Quantity: | 150 µg |
| Purification: | Immunogen affinity purified |
| Reconstitution: | Reconstitution with 150 µl of 0.01 M sterile PBS. "Note: please spin tube briefly prior to opening it to avoid any losses that might occur from lyophilized material adhering to the cap or sides of the tube". |
| Stability & Storage: | Use a manual defrost freezer and avoid repeated freeze-thaw cycles. 12 months from date of receipt, -20 to -70°C as supplied. 6 months, -20 to -70°C under sterile conditions after reconstitution. 1 month, 2 to 8°C under sterile conditions after reconstitution. |
| Shipping: | The product is shipped at 4°C. Upon receipt, store it immediately at the temperature recommended above. |

Application Information

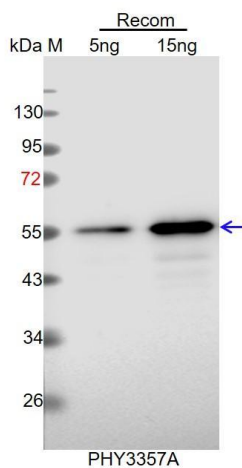
| | |
|--------------------------------|--|
| Recommended Dilution: | Western Blot (1:1000-1:2000) Note: Optimal dilutions/concentrations should be determined by the end user. |
| Expected / apparent MW: | 65 kDa |
| Confirmed Reactivity: | Coming soon |

Research Use Only

Predicted Reactivity:

Among species analyzed, the sequence of the synthetic peptide used for immunization is 100% homologues with the sequence in *Vitis vinifera*, and 80-99% homologues with the sequence in *Brassica rapa*, *Brassica napus*, *Solanum tuberosum*, *Populus trichocarpa*, *Solanum lycopersicum*, *Glycine max*, *Panicum virgatum*, *Oryza sativa*, *Nicotiana tabacum*, *Medicago truncatula*, *Zea mays*, *Sorghum bicolor*, *Setaria viridis*, *Triticum aestivum*, *Hordeum vulgare*, *Spinacia oleracea*. For more species homologues information, please contact tech support at tech@phytoab.com.

Application Example



Recom: 5 ng and 15 ng recombinant protein containing the peptide for immunization and having a molecular mass of 55 kDa.

Electrophoresis: 12% SDS-PAGE.

Transfer: blotting to NC (nitrocellulose) membrane for 1h.

Blocking: 5% skim milk at RT or 4°C for 1h.

Primary antibody: 1:1000 dilution overnight at 4°C.

Secondary antibody: 1:10000 dilution using Goat Anti-Rabbit IgG H&L (HRP) (Cat# PHY6000).

Detection: using chemiluminescence substrate and image were captured with CCD camera.