

Anti-Thylakoid membrane cytochrome b6 protein, N-terminal antibody

Catalog: PHY3013A

Product Information

Description:	Rabbit polyclonal antibody
Background:	The cytochrome b(6) subunit is the component of the cytochrome b6f complex, which mediates electron transfer between photosystem II (PSII) and photosystem I (PSI), cyclic electron flow around PSI, and state transitions.
Synonyms:	PetB, Cytochrome b6/f complex, Cyt b6, PHOTOSYNTHETIC ELECTRON TRANSFER B, PETB
Immunogen:	KLH-conjugated synthetic peptide (18 aa from N terminal section) derived from <i>Arabidopsis thaliana</i> PetB (ATCG00720).
Form:	Lyophilized
Quantity:	150 µg
Purification:	Immunogen affinity purified
Reconstitution:	Reconstitution with 150 µl of 0.01 M sterile PBS. "Note: please spin tube briefly prior to opening it to avoid any losses that might occur from lyophilized material adhering to the cap or sides of the tube".
Stability & Storage:	Use a manual defrost freezer and avoid repeated freeze-thaw cycles. 12 months from date of receipt, -20 to -70°C as supplied. 6 months, -20 to -70°C under sterile conditions after reconstitution. 1 month, 2 to 8°C under sterile conditions after reconstitution.
Shipping:	The product is shipped at 4°C. Upon receipt, store it immediately at the temperature recommended above.

Application Information

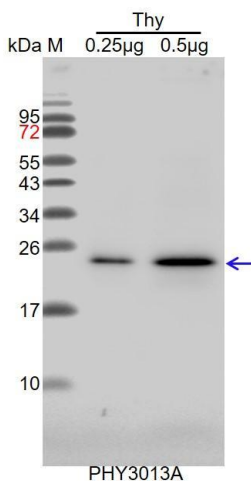
Recommended Dilution:	Western Blot (1:1000-1:2000) Note: Optimal dilutions/concentrations should be determined by the end user.
Expected / apparent MW:	24 kDa
Confirmed Reactivity:	<i>Arabidopsis thaliana</i>
Predicted Reactivity:	Among species analyzed, the sequence of the synthetic peptide used

Research Use Only

for immunization is 100% homologues with the sequence in *Glycine max*, *Brassica napus*, *Physcomitrium patens*, *Nicotiana tabacum*, *Solanum tuberosum*, *Cucumis sativus*, *Medicago truncatula*, *Brassica rapa*, *Populus trichocarpa*, *Solanum lycopersicum*, *Gossypium raimondii*, *Vitis vinifera*, and 80-99% homologues with the sequence in *Zea mays*, *Hordeum vulgare*, *Triticum aestivum*, *Oryza sativa*, *Panicum virgatum*, *Sorghum bicolor*, *Setaria viridis*, *Spinacia oleracea*, *Chlamydomonas reinhardtii*.

For more species homologues information, please contact tech support at tech@phytoab.com.

Application Example



Thy: thylakoid membrane protein from *Arabidopsis thaliana* containing 0.25 µg and 0.5 µg of chlorophyll, respectively.

Electrophoresis: 15%-SDS-PAGE.

Transfer: blotting to NC (nitrocellulose) membrane for 1h.

Blocking: 5% skim milk at RT or 4°C for 1h.

Primary antibody: 1:2000 dilution overnight at 4°C.

Secondary antibody: 1:10000 dilution using Goat Anti-Rabbit IgG H&L (HRP) (Cat# PHY6000).

Detection: using chemiluminescence substrate and image were captured with CCD camera.