

Anti-Vacuolar H⁺-ATPase, subunit c, N-terminal antibody

Catalog: PHY0175A

Product Information

Description:	Rabbit polyclonal antibody
Background:	V-ATPase c subunit is located in vacuole and is involved in ATP synthesis coupled proton transport.
Synonyms:	VHA-c1/3/5
Immunogen:	KLH-conjugated synthetic peptide of (14 aa from N terminal section) derived from <i>Arabidopsis thaliana</i> AT4G34720 (VHA-c1), AT4G38920 (VHA-c3), and AT2G16510 (VHA-c5).
Form:	Lyophilized
Quantity:	150 µg
Purification:	Immunogen affinity purified
Reconstitution:	Reconstitution with 150 µl of 0.01 M sterile PBS. "Note: please spin tube briefly prior to opening it to avoid any losses that might occur from lyophilized material adhering to the cap or sides of the tube".
Stability & Storage:	Use a manual defrost freezer and avoid repeated freeze-thaw cycles. 12 months from date of receipt, -20 to -70°C as supplied. 6 months, -20 to -70°C under sterile conditions after reconstitution. 1 month, 2 to 8°C under sterile conditions after reconstitution.
Shipping:	The product is shipped at 4°C. Upon receipt, store it immediately at the temperature recommended above.

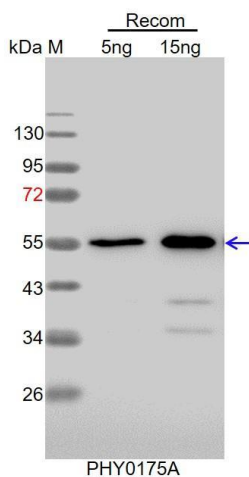
Application Information

Recommended Dilution:	Western Blot (1:1000-1:2000) Note: Optimal dilutions/concentrations should be determined by the end user.
Expected / apparent MW:	17 kDa
Confirmed Reactivity:	Coming soon
Predicted Reactivity:	Among analyzed species, the sequence of the synthetic peptide used for immunization is 100% homologous with the sequence in <i>Brassica</i>

Research Use Only

napus, *Brassica rapa*, *Vitis vinifera*, *Nicotiana tabacum*, and 80-99% homologues with the sequence in *Panicum virgatum*, *Gossypium raimondii*, *Solanum lycopersicum*, *Triticum aestivum*, *Oryza sativa*, *Zea mays*, *Glycine max*, *Spinacia oleracea*, *Setaria viridis*, *Cucumis sativus*, *Sorghum bicolor*, *Medicago truncatula*, *Hordeum vulgare*. The sequence of the synthetic peptide used for immunization is 93% homologues with the sequence in VHA-c2 (AT1G19910), and is 86% homologues with the sequence in VHA-c4 (AT1G75630). For more species homologues information, please contact tech support at tech@phytoab.com.

Application Example



Recom: 5 ng and 15 ng recombinant protein containing the peptide for immunization and having a molecular mass of 60 kDa.

Electrophoresis: 12% SDS-PAGE.

Transfer: blotting to NC (nitrocellulose) membrane for 1h.

Blocking: 5% skim milk at RT or 4°C for 1h.

Primary antibody: 1:1000 dilution overnight at 4°C.

Secondary antibody: 1:10000 dilution using Goat Anti-Rabbit IgG H&L (HRP) (Cat# PHY6000).

Detection: using chemiluminescence substrate and image were captured with CCD camera.