

# Anti-PsbP domain-containing protein 1, chloroplastic antibody

Catalog: PHY2920A

## Product Information

<b>Description:</b>	Rabbit polyclonal antibody
<b>Background:</b>	PPD1 is a nuclear-encoded thylakoid luminal protein that is associated with photosystem I (PSI) but is not an integral subunit of PSI. It is a PSI assembly factor that assists the proper folding and integration of PsaB and PsaA into the thylakoid membrane. It is involved in the assembly of PSI reaction center heterodimer core.
<b>Synonyms:</b>	PPD1, PSBP-DOMAIN PROTEIN1
<b>Immunogen:</b>	KLH-conjugated synthetic peptide (14 aa from N terminal section) derived from <i>Arabidopsis thaliana</i> PPD1 (AT4G15510).
<b>Form:</b>	Lyophilized
<b>Quantity:</b>	150 µg
<b>Purification:</b>	Immunogen affinity purified
<b>Reconstitution:</b>	Reconstitution with 150µl of 0.01M sterile PBS. "Note: please spin tube briefly prior to opening it to avoid any losses that might occur from lyophilized material adhering to the cap or sides of the tube".
<b>Stability &amp; Storage:</b>	Use a manual defrost freezer and avoid repeated freeze-thaw cycles. 12 months from date of receipt, -20 to -70°C as supplied. 6 months, -20 to -70°C under sterile conditions after reconstitution. 1 month, 2 to 8°C under sterile conditions after reconstitution.
<b>Shipping:</b>	The product is shipped at 4°C. Upon receipt, store it immediately at the temperature recommended above.

## Application Information

<b>Recommended Dilution:</b>	Western Blot (1:1000-1:2000) Note: Optimal dilutions/concentrations should be determined by the end user.
<b>Expected / apparent MW:</b>	32 kDa
<b>Confirmed Reactivity:</b>	Coming soon

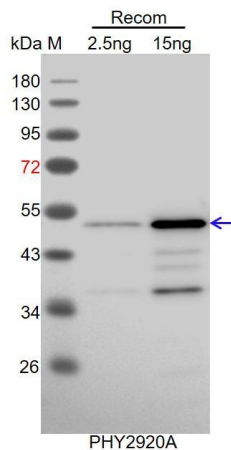
Research Use Only

### Predicted Reactivity:

Among species analyzed, the sequence of the synthetic peptide used for immunization is 100% homologues with the sequence in *Vitis vinifera*, *Brassica rapa*, *Brassica napus* and 80-99% homologues with the sequence in *Nicotiana tabacum*, *Triticum aestivum*, *Solanum lycopersicum*, *Solanum tuberosum*, *Hordeum vulgare*, *Oryza sativa*, *Populus trichocarpa*, *Gossypium raimondii*, *Zea mays*, *Panicum virgatum*, *Setaria viridis*, *Medicago truncatula*, *Glycine max*, *Cucumis sativus*.

For more species homologues information, please contact tech support at [tech@phytoab.com](mailto:tech@phytoab.com).

### Application Example



Recom: 2.5 ng and 15 ng recombinant protein containing the peptide for immunization and having a molecular mass of 54 kDa.

**Electrophoresis:** 12% SDS-PAGE.

**Transfer:** blotting to NC (nitrocellulose) membrane for 1h.

**Blocking:** 5% skim milk at RT or 4°C for 1h.

**Primary antibody:** 1:1000 dilution overnight at 4°C.

**Secondary antibody:** 1:10000 dilution using Goat Anti-Rabbit IgG H&L (HRP) (Cat# PHY6000).

**Detection:** using chemiluminescence substrate and image were captured with CCD camera.