

Anti-PsaK subunit of photosystem I antibody

Catalog: PHY3473S

Product Information

Description:	Rabbit polyclonal antibody
Background:	Photosystem I (PSI) is a multisubunit complex that catalyses the final stage of the light reactions in chloroplasts. Plant photosystem I (PSI) consists of at least 18 different protein subunits and PsaK is a subunit with two transmembrane α -helices, which in cyanobacteria is located at the periphery of the complex. PsaK has a role in organizing the peripheral light-harvesting complexes on the core antenna of photosystem I.
Synonyms:	PsaK, Photosystem I reaction center subunit PsaK, chloroplastic, PSI-K, Photosystem I subunit K
Immunogen:	KLH-conjugated synthetic peptide of PsaK (14 aa from Central section) derived from <i>Arabidopsis thaliana</i> (AT1G30380).
Form:	Lyophilized
Quantity:	150 μ g
Purification:	Serum Peptide affinity form antibody available upon request at info@phytoab.com .
Reconstitution:	Reconstitution with 150 μ l of sterile water. "Note: please spin tube briefly prior to opening it to avoid any losses that might occur from lyophilized material adhering to the cap or sides of the tube".
Stability & Storage:	Use a manual defrost freezer and avoid repeated freeze-thaw cycles. 12 months from date of receipt, -20 to -70°C as supplied. 6 months, -20 to -70°C under sterile conditions after reconstitution. 1 month, 2 to 8°C under sterile conditions after reconstitution.
Shipping:	The product is shipped at 4°C. Upon receipt, store it immediately at the temperature recommended above.

Application Information

Recommended Dilution:	Western Blot (1:1000-1:2000) Note: Optimal dilutions/concentrations should be determined by the end user.
Expected / apparent MW:	13 / 8 kDa

Research Use Only

Confirmed Reactivity:

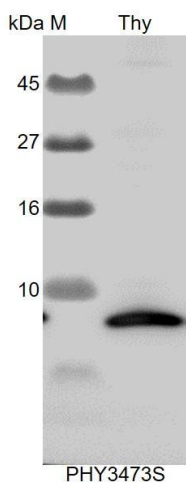
Arabidopsis thaliana

Predicted Reactivity:

Among species analyzed, the sequence of the synthetic peptide used for immunization is 80-99% homologues with the sequence in *Spinacia oleracea*, *Glycine max*, *Vitis vinifera*, *Panicum virgatum*, *Setaria viridis*, *Zea mays*, *Brassica rapa*, *Sorghum bicolor*, *Brassica napus*, *Triticum aestivum*, *Hordeum vulgare*, *Nicotiana tabacum*, *Gossypium raimondii*, *Populus trichocarpa*, *Solanum lycopersicum*, *Medicago truncatula*, *Oryza sativa Indica Group*, *Oryza sativa Japonica Group*.

For more species homologues information, please contact tech support at tech@phytoab.com.

Application Example



Thy: Thylakoid membrane protein from *Arabidopsis thaliana* containing 2 µg of chlorophyll.

Electrophoresis: Tricine-SDS-PAGE.

Transfer: blotting to NC (nitrocellulose) membrane for 1h.

Blocking: 5% skim milk at RT or 4°C for 1h.

Primary antibody: 1:2000 dilution overnight at 4°C.

Secondary antibody: 1:10000 dilution using Goat Anti-Rabbit IgG H&L (HRP) (Cat# PHY6000).

Detection: using chemiluminescence substrate and image were captured with CCD camera.