

Anti-Calcineurin B-like protein 2, C terminal antibody

Catalog: PHY2361A

Product Information

Description:	Rabbit polyclonal antibody
Background:	CBL2 is a member of the Arabidopsis CBL (Calcineurin B-like Calcium Sensor) protein family. CBL proteins interact with CIPK serine-threonine protein kinases. It mediates the activation of AKT1 by CIPK proteins (CIPK6, CIPK16, and CIPK23) in response to low potassium conditions and in the context of stomatal movement.
Synonyms:	CBL2, ATCBL2, CALCINEURIN B-LIKE PROTEIN 2, SCABP1, SOS3-LIKE CALCIUM BINDING PROTEIN 1
Immunogen:	KLH-conjugated synthetic peptide (16 aa from C terminal section) derived from <i>Arabidopsis thaliana</i> CBL2 (AT5G55990).
Form:	Lyophilized
Quantity:	150 µg
Purification:	Immunogen affinity purified
Reconstitution:	Reconstitution with 150 µl of 0.01 M sterile PBS. "Note: please spin tube briefly prior to opening it to avoid any losses that might occur from lyophilized material adhering to the cap or sides of the tube".
Stability & Storage:	Use a manual defrost freezer and avoid repeated freeze-thaw cycles. 12 months from date of receipt, -20 to -70°C as supplied. 6 months, -20 to -70°C under sterile conditions after reconstitution. 1 month, 2 to 8°C under sterile conditions after reconstitution.
Shipping:	The product is shipped at 4°C. Upon receipt, store it immediately at the temperature recommended above.

Application Information

Recommended Dilution:	Western Blot (1:1000-1:2000) Note: Optimal dilutions/concentrations should be determined by the end user.
Expected / apparent MW:	26 kDa
Confirmed Reactivity:	Coming soon

Research Use Only

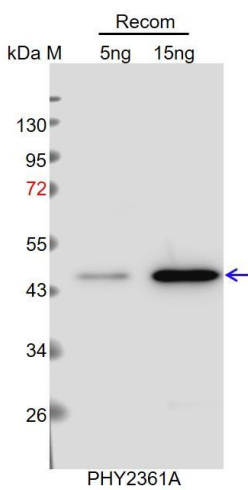
Predicted Reactivity:

Among species analyzed, the sequence of the synthetic peptide used for immunization is 100% homologues with the sequence in *Brassica rapa*, *Brassica napus*, *Vitis vinifera*, *Oryza sativa Japonica Group*, *Triticum aestivum*, *Zea mays*, *Medicago truncatula*, *Cucumis sativus*, *Glycine max*, *Populus trichocarpa*, *Setaria viridis*, *Hordeum vulgare*, *Panicum virgatum*, *Nicotiana tabacum*, *Solanum lycopersicum*, *Solanum tuberosum*.

The sequence of the synthetic peptide used for immunization is 94% homologues with the sequence in CBL3 (AT4G26570) and CBL6 (AT4G16350).

For more species homologues information, please contact tech support at tech@phytoab.com.

Application Example



Recom: 5 ng and 15 ng recombinant protein containing the peptide for immunization and having a molecular mass of 47 kDa.

Electrophoresis: 12% SDS-PAGE.

Transfer: blotting to NC (nitrocellulose) membrane for 1h.

Blocking: 5% skim milk at RT or 4°C for 1h.

Primary antibody: 1:1000 dilution overnight at 4°C.

Secondary antibody: 1:10000 dilution using Goat Anti-Rabbit IgG H&L (HRP) (Cat# PHY6000).

Detection: using chemiluminescence substrate and image were captured with CCD camera.