

Anti-Translocase of chloroplast 132, chloroplastic antibody

Catalog: PHY3585A

Product Information

Description:	Rabbit polyclonal antibody
Background:	The Translocon at the Outer envelope membrane of Chloroplasts (TOC) complex transports nuclear-encoded proteins into plastids, and a receptor of this complex, Toc132 seems to recognize chloroplast-destined precursor proteins and regulate their presentation to the translocation channel through GTP hydrolysis. In <i>Arabidopsis thaliana</i> , four psToc159 homologs are identified, termed atToc159(AT4G02510), atToc132(AT2G16640), atToc120(AT3G16620) and atToc90(AT5G20300).
Synonyms:	TOC132, AIC1, ARSENATE INDUCED CHLOROSIS 1, ATTOC132, MULTIMERIC TRANSLOCON COMPLEX IN THE OUTER ENVELOPE MEMBRANE 132
Immunogen:	KLH-conjugated synthetic peptide (16 aa from N terminal section) derived from <i>Arabidopsis thaliana</i> TOC132 (AT2G16640).
Form:	Lyophilized
Quantity:	150 µg
Purification:	Immunogen affinity purified
Reconstitution:	Reconstitution with 150 µl of 0.01 M sterile PBS. "Note: please spin tube briefly prior to opening it to avoid any losses that might occur from lyophilized material adhering to the cap or sides of the tube".
Stability &	Use a manual defrost freezer and avoid repeated freeze-thaw cycles.
Storage:	12 months from date of receipt, -20 to -70°C as supplied. 6 months, -20 to -70°C under sterile conditions after reconstitution. 1 month, 2 to 8°C under sterile conditions after reconstitution.
Shipping:	The product is shipped at 4°C. Upon receipt, store it immediately at the temperature recommended above.

Application Information

Recommended Dilution:	Western Blot (1:1000-1:2000) Note: Optimal dilutions/concentrations should be determined by the
------------------------------	--

Research Use Only

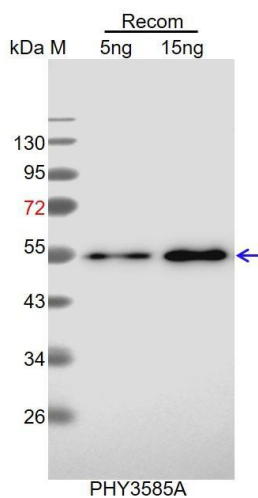
end user.

Expected / apparent MW: 132 kDa

Confirmed Reactivity: Coming soon

Predicted Reactivity: For more species homologues information, please contact tech support at tech@phytoab.com.

Application Example



Recom: 5 ng and 15 ng recombinant protein containing the peptide for immunization and having a molecular mass of 55 kDa.

Electrophoresis: 12% SDS-PAGE.

Transfer: blotting to NC (nitrocellulose) membrane for 1h.

Blocking: 5% skim milk at RT or 4°C for 1h.

Primary antibody: 1:1000 dilution overnight at 4°C.

Secondary antibody: 1:10000 dilution using Goat Anti-Rabbit IgG H&L (HRP) (Cat# PHY6000).

Detection: using chemiluminescence substrate and image were captured with CCD camera.