

Anti-Heat stress transcription factor A-1a antibody

Catalog: PHY3269A

Product Information

Description:	Rabbit polyclonal antibody
Background:	HSF1 is a trimer, interacts with HSP70, also with TBP, DNA interaction is modulated by phosphorylation and is heat-shock inducible.
Synonyms:	HSF1, ARABIDOPSIS THALIANA CLASS A HEAT SHOCK FACTOR 1A, ARABIDOPSIS THALIANA HEAT SHOCK FACTOR 1, ATHSF1, ATHSFA1A, CLASS A HEAT SHOCK FACTOR 1A, HEAT SHOCK FACTOR 1, HSFA1A
Immunogen:	KLH-conjugated synthetic peptide (15 aa from Central section) derived from <i>Arabidopsis thaliana</i> HSF1 (AT4G17750).
Form:	Lyophilized
Quantity:	150 µg
Purification:	Immunogen affinity purified
Reconstitution:	Reconstitution with 150 µl of 0.01 M sterile PBS. "Note: please spin tube briefly prior to opening it to avoid any losses that might occur from lyophilized material adhering to the cap or sides of the tube".
Stability &	Use a manual defrost freezer and avoid repeated freeze-thaw cycles.
Storage:	12 months from date of receipt, -20 to -70°C as supplied. 6 months, -20 to -70°C under sterile conditions after reconstitution. 1 month, 2 to 8°C under sterile conditions after reconstitution.
Shipping:	The product is shipped at 4°C. Upon receipt, store it immediately at the temperature recommended above.

Application Information

Recommended Dilution:	Western Blot (1:1000-1:2000) Note: Optimal dilutions/concentrations should be determined by the end user.
Expected / apparent MW:	56 kDa
Confirmed Reactivity:	Coming soon
Predicted Reactivity:	Among species analyzed, the sequence of the synthetic peptide used for immunization is 100% homologues with the sequence in <i>Brassica napus</i> , <i>Brassica rapa</i> , and 80-99% homologues with the sequence

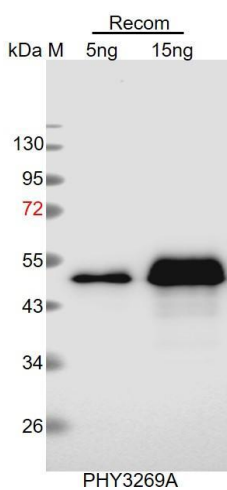
Research Use Only

in *Vitis vinifera*, *Solanum tuberosum*, *Solanum lycopersicum*, *Cucumis sativus*, *Gossypium raimondii*, *Populus trichocarpa*, *Nicotiana tabacum*, *Spinacia oleracea*, *Medicago truncatula*, *Glycine max*, *Zea mays*, *Sorghum bicolor*, *Setaria viridis*, *Panicum virgatum*.

The sequence of the synthetic peptide used for immunization is 93% homologues with the sequence in HSFA1D (AT1G32330), and 87% homologues with the sequence in HSF3 (AT5G16820), HSFA1E (AT3G02990).

For more species homologues information, please contact tech support at tech@phytoab.com.

Application Example



Recom: 5 ng and 15 ng recombinant protein containing the peptide for immunization and having a molecular mass of 55 kDa.

Electrophoresis: 12% SDS-PAGE.

Transfer: blotting to NC (nitrocellulose) membrane for 1h.

Blocking: 5% skim milk at RT or 4°C for 1h.

Primary antibody: 1:1000 dilution overnight at 4°C.

Secondary antibody: 1:10000 dilution using Goat Anti-Rabbit IgG H&L (HRP) (Cat# PHY6000).

Detection: using chemiluminescence substrate and image were captured with CCD camera.