

# Anti-Protein STAY-GREEN 1, chloroplastic antibody

Catalog: PHY1024A

## Product Information

<b>Description:</b>	Rabbit polyclonal antibody
<b>Background:</b>	ATNYE1 is upregulated during maximal senescence in the Arabidopsis life cycle, especially in senescent leaves. Acts antagonistically with SGR2 (AT4G11910) to balance chlorophyll catabolism in chloroplasts with the dismantling and remobilizing of other cellular components in senescing leaf cells. Involved in the disassembling mechanism of the intact light-harvesting complex of photosystem II (LHCII) in the thylakoid membranes.
<b>Synonyms:</b>	NYE1, ATNYE1, NON-YELLOWING 1, SGR, SGR1, STAY-GREEN, STAY-GREEN 1
<b>Immunogen:</b>	KLH-conjugated synthetic peptide (16 aa from C terminal section) derived from <i>Arabidopsis thaliana</i> ATNYE1 (AT4G22920).
<b>Form:</b>	Lyophilized
<b>Quantity:</b>	150 µg
<b>Purification:</b>	Immunogen affinity purified
<b>Reconstitution:</b>	Reconstitution with 150 µl of 0.01 M sterile PBS. "Note: please spin tube briefly prior to opening it to avoid any losses that might occur from lyophilized material adhering to the cap or sides of the tube".
<b>Stability &amp; Storage:</b>	Use a manual defrost freezer and avoid repeated freeze-thaw cycles. 12 months from date of receipt, -20 to -70°C as supplied. 6 months, -20 to -70°C under sterile conditions after reconstitution. 1 month, 2 to 8°C under sterile conditions after reconstitution.
<b>Shipping:</b>	The product is shipped at 4°C. Upon receipt, store it immediately at the temperature recommended above.
<b>Reference:</b>	Sylvain Aubry, et al., Plant Mol Biol 2008, 67; 243-256.

## Application Information

<b>Recommended Dilution:</b>	Western Blot (1:1000-1:2000) Note: Optimal dilutions/concentrations should be determined by the end user.
<b>Expected / apparent MW:</b>	30 kDa

Research Use Only

**Confirmed Reactivity:**

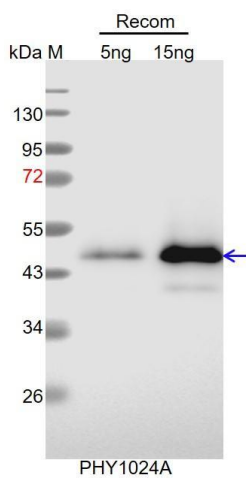
Coming soon

**Predicted Reactivity:**

Among species analyzed, the sequence of the synthetic peptide used for immunization is 80-99% homologues with the sequence in *Brassica napus*.

For more species homologues information, please contact tech support at [tech@phytoab.com](mailto:tech@phytoab.com).

**Application Example**



Recom: 5 ng and 15 ng recombinant protein containing the peptide for immunization and having a molecular mass of 45 kDa.

**Electrophoresis:** 12% SDS-PAGE

**Transfer:** blotting to NC (nitrocellulose) membrane for 1 h.

**Blocking:** 5% skim milk at RT or 4°C for 1 h.

**Primary antibody:** 1:1000 dilution overnight at 4°C.

**Secondary antibody:** 1:10000 dilution using Goat Anti-Rabbit IgG H&L (HRP) (Cat# PHY6000)

**Detection:** using chemiluminescence substrate and image were captured with CCD camera.