

# Anti-Mitogen-activated protein kinase 3 antibody

Catalog: PHY3352A

## Product Information

<b>Description:</b>	Rabbit polyclonal antibody
<b>Background:</b>	In Arabidopsis, MPK3 (AT3G45640), MPK4 (AT4G01370), and MPK6 (AT2G43790) are the best characterized members of the MAPK family and have also been demonstrated to be part of the ABA signal transduction pathway. MPK3 is activated by both ABA and hydrogen peroxide in Arabidopsis seedlings, and MPK3 overexpression increases ABA sensitivity in ABA-induced postgermination arrest of growth, suggesting that the ABA signal is transmitted through MPK3 in this system.
<b>Synonyms:</b>	MPK3, ATMAPK3, ATMPK3, MITOGEN-ACTIVATED PROTEIN KINASE 3
<b>Immunogen:</b>	KLH-conjugated synthetic peptide (14 aa from C terminal section) derived from <i>Arabidopsis thaliana</i> MPK3 (AT3G45640).
<b>Form:</b>	Lyophilized
<b>Quantity:</b>	150 µg
<b>Purification:</b>	Immunogen affinity purified
<b>Reconstitution:</b>	Reconstitution with 150 µl of 0.01 M sterile PBS. "Note: please spin tube briefly prior to opening it to avoid any losses that might occur from lyophilized material adhering to the cap or sides of the tube".
<b>Stability &amp;</b>	Use a manual defrost freezer and avoid repeated freeze-thaw cycles.
<b>Storage:</b>	12 months from date of receipt, -20 to -70°C as supplied. 6 months, -20 to -70°C under sterile conditions after reconstitution. 1 month, 2 to 8°C under sterile conditions after reconstitution.
<b>Shipping:</b>	The product is shipped at 4°C. Upon receipt, store it immediately at the temperature recommended above.

## Application Information

<b>Recommended Dilution:</b>	Western Blot (1:1000-1:2000) Note: Optimal dilutions/concentrations should be determined by the end user.
<b>Expected / apparent MW:</b>	43 kDa

Research Use Only

**Confirmed Reactivity:**

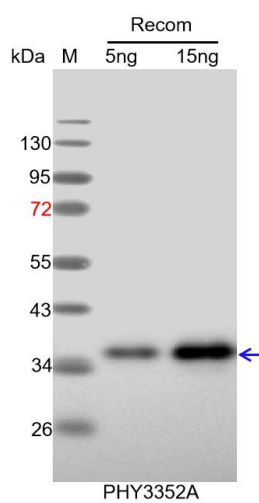
*Arabidopsis thaliana*

**Predicted Reactivity:**

Among species analyzed, the sequence of the synthetic peptide used for immunization is 100% homologues with the sequence in *Brassica napus*, *Brassica rapa*, and 80-99% homologues with the sequence in *Nicotiana tabacum*.

For more species homologues information, please contact tech support at [tech@phytoab.com](mailto:tech@phytoab.com).

## Application Example



Recom: 5 ng and 15 ng recombinant protein containing the peptide for immunization and having a molecular mass of 35 kDa.

**Electrophoresis:** 12% SDS-PAGE.

**Transfer:** blotting to NC (nitrocellulose) membrane for 1 h.

**Blocking:** 5% skim milk at RT or 4°C for 1 h.

**Primary antibody:** 1:1000 dilution overnight at 4°C.

**Secondary antibody:** 1:10000 dilution using Goat Anti-Rabbit IgG H&L (HRP) (Cat# PHY6000).

**Detection:** using chemiluminescence substrate and image were captured with CCD camera.