

Anti-Thioredoxin reductase 2 antibody

Catalog: PHY1552A

Product Information

Description:	Rabbit polyclonal antibody
Background:	Thioredoxin (NTR/TRX) and glutathione (GSH/GRX) are the two major systems which play a key role in the maintenance of cellular redox homeostasis. They are essential for plant development, cell division or the response to environmental stresses. In Arabidopsis, three NTR proteins are including NTRA (AT2G17420), NTRB (AT4G35460), NTRC (AT2G41680).
Synonyms:	Ntra, ATNTRA, NADPH-DEPENDENT THIOREDOXIN REDUCTASE 2, NADPH-DEPENDENT THIOREDOXIN REDUCTASE A, NTR2, THIOREDOXIN REDUCTASE A
Immunogen:	KLH-conjugated synthetic peptide (14 aa from central section) derived from <i>Arabidopsis thaliana</i> Ntra (AT2G17420).
Form:	Lyophilized
Quantity:	150 µg
Purification:	Immunogen affinity purified
Reconstitution:	Reconstitution with 150 µl of 0.01 M sterile PBS. "Note: please spin tube briefly prior to opening it to avoid any losses that might occur from lyophilized material adhering to the cap or sides of the tube".
Stability &	Use a manual defrost freezer and avoid repeated freeze-thaw cycles.
Storage:	12 months from date of receipt, -20 to -70°C as supplied. 6 months, -20 to -70°C under sterile conditions after reconstitution. 1 month, 2 to 8°C under sterile conditions after reconstitution.
Shipping:	The product is shipped at 4°C. Upon receipt, store it immediately at the temperature recommended above.

Application Information

Recommended Dilution:	Western Blot (1:1000-1:2000) Note: Optimal dilutions/concentrations should be determined by the end user.
Expected / apparent MW:	41 kDa

Research Use Only

Confirmed Reactivity:

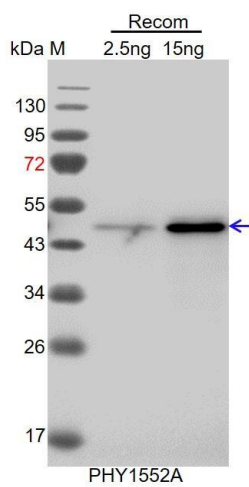
Coming soon

Predicted Reactivity:

Among species analyzed, the sequence of the synthetic peptide used for immunization is 100% homologues with the sequence in *Brassica rapa*, *Brassica napus*.

For more species homologues information, please contact tech support at tech@phytoab.com.

Application Example



Recom: 2.5 ng and 15 ng recombinant protein containing the peptide for immunization and having a molecular mass of 50 kDa.

Electrophoresis: 12% SDS-PAGE.

Transfer: blotting to NC (nitrocellulose) membrane for 1 h.

Blocking: 5% skim milk at RT or 4°C for 1 h.

Primary antibody: 1:1000 dilution overnight at 4°C.

Secondary antibody: 1:10000 dilution using Goat Anti-Rabbit IgG H&L (HRP) (Cat# PHY6000).

Detection: using chemiluminescence substrate and image were captured with CCD camera.