

# Anti-Psb27 protein antibody

Catalog: PHY2320A

## Product Information

<b>Description:</b>	Rabbit polyclonal antibody
<b>Background:</b>	PSB27 is a chloroplast lumen localized protein that is involved in adaptation to changes in light intensity.
<b>Synonyms:</b>	Psb27, Psb27-H1, Thylakoid lumenal protein PSB27-H1
<b>Immunogen:</b>	KLH-conjugated synthetic peptide (16 aa from central section) derived from <i>Arabidopsis thaliana</i> Psb27 (AT1G03600).
<b>Form:</b>	Lyophilized
<b>Quantity:</b>	150 µg
<b>Purification:</b>	Immunogen affinity purified
<b>Reconstitution:</b>	Reconstitution with 150 µl of 0.01 M sterile PBS. "Note: please spin tube briefly prior to opening it to avoid any losses that might occur from lyophilized material adhering to the cap or sides of the tube".
<b>Stability &amp; Storage:</b>	Use a manual defrost freezer and avoid repeated freeze-thaw cycles. 12 months from date of receipt, -20 to -70°C as supplied. 6 months, -20 to -70°C under sterile conditions after reconstitution. 1 month, 2 to 8°C under sterile conditions after reconstitution.
<b>Shipping:</b>	The product is shipped at 4°C. Upon receipt, store it immediately at the temperature recommended above.

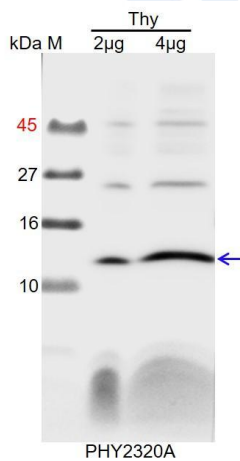
## Application Information

<b>Recommended Dilution:</b>	Western Blot (1:1000-1:2000) Note: Optimal dilutions/concentrations should be determined by the end user.
<b>Expected / apparent MW:</b>	19 / 12 kDa
<b>Confirmed Reactivity:</b>	<i>Arabidopsis thaliana</i>
<b>Predicted Reactivity:</b>	Among species analyzed, the sequence of the synthetic peptide used for immunization is 80-99% homologues with the sequence in <i>Brassica rapa</i> , <i>Brassica napus</i> , <i>Panicum virgatum</i> , <i>Hordeum vulgare</i> , <i>Triticum aestivum</i> . For more species homologues information, please contact tech

Research Use Only

support at [tech@phytoab.com](mailto:tech@phytoab.com).

## Application Example



Thy: Thylakoid membrane protein from *Arabidopsis thaliana* containing 2 µg and 4 µg of chlorophyll.

**Electrophoresis:** Tricine-SDS-PAGE.

**Transfer:** blotting to NC (nitrocellulose) membrane for 1 h.

**Blocking:** 5% skim milk at RT or 4°C for 1 h.

**Primary antibody:** 1:1000 dilution overnight at 4°C.

**Secondary antibody:** 1:10000 dilution using Goat Anti-Rabbit IgG H&L (HRP) (Cat# PHY6000).

**Detection:** using chemiluminescence substrate and image were captured with CCD camera.