

# Anti-Ribosomal protein S21 family protein antibody

Catalog: PHY3036A

## Product Information

<b>Description:</b>	Rabbit polyclonal antibody
<b>Background:</b>	GHS1 is plastid ribosomal protein S21, the mRNA is cell-to-cell mobile.
<b>Synonyms:</b>	GHS1, GLUCOSE HYPERSENSITIVE 1, LOW PHOTOSYNTHETIC EFFICIENCY2, LPE2, RPS21
<b>Immunogen:</b>	KLH-conjugated synthetic peptide (18 aa from C-terminal section) derived from <i>Arabidopsis thaliana</i> GHS1 (AT3G27160).
<b>Form:</b>	Lyophilized
<b>Quantity:</b>	150 µg
<b>Purification:</b>	Immunogen affinity purified
<b>Reconstitution:</b>	Reconstitution with 150 µl of 0.01 M sterile PBS. "Note: please spin tube briefly prior to opening it to avoid any losses that might occur from lyophilized material adhering to the cap or sides of the tube".
<b>Stability &amp; Storage:</b>	Use a manual defrost freezer and avoid repeated freeze-thaw cycles. 12 months from date of receipt, -20 to -70°C as supplied. 6 months, -20 to -70°C under sterile conditions after reconstitution. 1 month, 2 to 8°C under sterile conditions after reconstitution.
<b>Shipping:</b>	The product is shipped at 4°C. Upon receipt, store it immediately at the temperature recommended above.

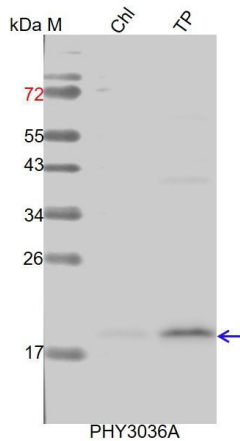
## Application Information

<b>Recommended Dilution:</b>	Western Blot (1:1000-1:2000) Note: Optimal dilutions/concentrations should be determined by the end user.
<b>Expected / apparent MW:</b>	21 / 18 kDa
<b>Confirmed Reactivity:</b>	<i>Arabidopsis thaliana</i>
<b>Predicted Reactivity:</b>	Among species analyzed, the sequence of the synthetic peptide used for immunization is 100% homologues with the sequence in <i>Brassica rapa</i> , <i>Brassica napus</i> , and 80-99% homologues with the sequence in <i>Vitis vinifera</i> , <i>Solanum tuberosum</i> , <i>Solanum lycopersicum</i> .

Research Use Only

For more species homologues information, please contact tech support at [tech@phytoab.com](mailto:tech@phytoab.com).

## Application Example



Chl: 7.5  $\mu$ g total chloroplast protein from *Arabidopsis thaliana*.

TP: 15  $\mu$ g total protein from *Arabidopsis thaliana*.

**Electrophoresis:** 12% SDS-PAGE

**Transfer:** blotting to NC (nitrocellulose) membrane for 1 h.

**Blocking:** 5% skim milk at RT or 4°C for 1 h.

**Primary antibody:** 1:2000 dilution overnight at 4°C.

**Secondary antibody:** 1:10000 dilution using Goat Anti-Rabbit

IgG&L (HRP) (Cat# PHY6000)

**Detection:** using chemiluminescence substrate and image were captured with CCD camera.