

Anti-Glutamate dehydrogenase 1/2 antibody

Catalog: PHY0113A

Product Information

Description:	Rabbit polyclonal antibody
Background:	Glutamate dehydrogenase (GDH), which catalyzes in vitro reversible reductive amination of 2-oxoglutarate to form glutamate, is a key player in the metabolism of glutamate. In <i>Arabidopsis thaliana</i> , three genes (<i>GDH1</i> (AT5G18170), <i>GDH2</i> (AT5G07440) and <i>GDH3</i> (AT3G03910)) encode three different GDH subunits (β , α and γ) that randomly associate to form a complex array of homo- and hetero-hexamers.
Synonyms:	GDH1/2
Immunogen:	KLH-conjugated synthetic peptide (15 aa from C terminal section) derived from <i>Arabidopsis thaliana</i> GDH1 (AT5G18170) and GDH2 (AT5G07440).
Form:	Lyophilized
Quantity:	150 μ g
Purification:	Immunogen affinity purified
Reconstitution:	Reconstitution with 150 μ l of 0.01 M sterile PBS. "Note: please spin tube briefly prior to opening it to avoid any losses that might occur from lyophilized material adhering to the cap or sides of the tube".
Stability & Storage:	Use a manual defrost freezer and avoid repeated freeze-thaw cycles. 12 months from date of receipt, -20 to -70°C as supplied. 6 months, -20 to -70°C under sterile conditions after reconstitution. 1 month, 2 to 8°C under sterile conditions after reconstitution.
Shipping:	The product is shipped at 4°C. Upon receipt, store it immediately at the temperature recommended above.

Application Information

Recommended Dilution:	Western Blot (1:1000-1:2000) Note: Optimal dilutions/concentrations should be determined by the end user.
Expected / apparent MW:	45 / 43 kDa
Confirmed Reactivity:	<i>Arabidopsis thaliana</i>

Research Use Only

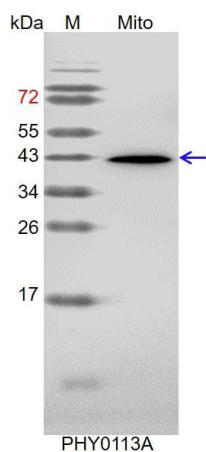
Predicted Reactivity:

Among species analyzed, the sequence of the synthetic peptide used for immunization is 100% homologues with the sequence in *Brassica napus*, *Nicotiana tabacum*, *Glycine max*, *Brassica rapa*, *Medicago truncatula*, *Solanum tuberosum*, *Solanum lycopersicum*, and 80-99% homologues with the sequence in *Vitis vinifera*, *Cucumis sativus*, *Panicum virgatum*, *Gossypium raimondii*, *Setaria viridis*, *Zea mays*, *Triticum aestivum*.

The sequence of the synthetic peptide used for immunization is 87% homologues with the sequence in GDH3 (AT3G03910).

For more species homologues information, please contact tech support at tech@phytoab.com.

Application Example



Mito: 10 µg mitochondria protein from *Arabidopsis thaliana*.

Electrophoresis: 15% SDS-PAGE

Transfer: blotting to NC (nitrocellulose) membrane for 1 h.

Blocking: 5% skim milk at RT or 4°C for 1 h.

Primary antibody: 1:2000 dilution overnight at 4°C.

Secondary antibody: 1:10000 dilution using Goat Anti-Rabbit IgG H&L (HRP) (Cat# PHY6000)

Detection: using chemiluminescence substrate and image were captured with CCD camera.