

Anti-Microtubule-associated protein 65-1/2 antibody

Catalog: PHY3316A

Product Information

Description:	Rabbit polyclonal antibody
Background:	The <i>Arabidopsis thaliana</i> MAP65-1 (AT5G55230) and MAP65-2 (AT4G26760) genes are members of the larger eukaryotic MAP65/ASE1/PRC gene family of microtubule-associated proteins.
Synonyms:	MAP65-1/2, MICROTUBULE-ASSOCIATED PROTEIN 65-1/2, ATMAP65-1/2
Immunogen:	KLH-conjugated synthetic peptide (15 aa from C terminal section) derived from <i>Arabidopsis thaliana</i> MAP65-1 (AT5G55230) and MAP65-2 (AT4G26760).
Form:	Lyophilized
Quantity:	150 µg
Purification:	Immunogen affinity purified
Reconstitution:	Reconstitution with 150 µl of 0.01 M sterile PBS. "Note: please spin tube briefly prior to opening it to avoid any losses that might occur from lyophilized material adhering to the cap or sides of the tube".
Stability & Storage:	Use a manual defrost freezer and avoid repeated freeze-thaw cycles. 12 months from date of receipt, -20 to -70°C as supplied. 6 months, -20 to -70°C under sterile conditions after reconstitution. 1 month, 2 to 8°C under sterile conditions after reconstitution.
Shipping:	The product is shipped at 4°C. Upon receipt, store it immediately at the temperature recommended above.

Application Information

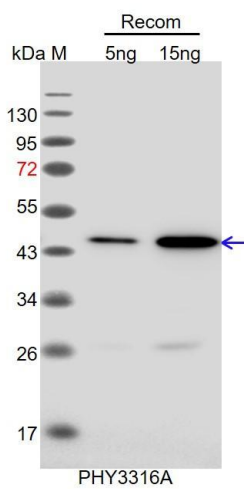
Recommended Dilution:	Western Blot (1:1000-1:2000) Note: Optimal dilutions/concentrations should be determined by the end user.
Expected / apparent MW:	69 kDa
Confirmed Reactivity:	<i>Arabidopsis thaliana</i>
Predicted Reactivity:	Among analyzed species, the sequence of the synthetic peptide used for immunization is 100% homologues with the sequence in <i>Brassica rapa</i> , <i>Brassica napus</i> , and 80-99% homologues with the sequence in <i>Nicotiana tabacum</i> , <i>Solanum tuberosum</i> , <i>Solanum lycopersicum</i> ,

Research Use Only

Panicum virgatum, *Vitis vinifera*, *Glycine max*, *Populus trichocarpa*,
Gossypium raimondii, *Medicago truncatula*, *Cucumis sativus*,
Spinacia oleracea, *Zea mays*, *Setaria viridis*, *Triticum aestivum*,
Sorghum bicolor.

For more species homologues information, please contact tech support at tech@phytoab.com.

Application Example



Recom: 5 ng and 15 ng recombinant protein containing the peptide for immunization and having a molecular mass of 50 kDa.

Electrophoresis: 12% SDS-PAGE.

Transfer: blotting to NC (nitrocellulose) membrane for 1 h.

Blocking: 5% skim milk at RT or 4°C for 1 h.

Primary antibody: 1:1000 dilution overnight at 4°C.

Secondary antibody: 1:10000 dilution using Goat Anti-Rabbit IgG H&L (HRP) (Cat# PHY6000).

Detection: using chemiluminescence substrate and image were captured with CCD camera.