

Anti-Potassium channel SKOR antibody

Catalog: PHY2452A

Product Information

| | |
|---------------------------------|--|
| Description: | Rabbit polyclonal antibody |
| Background: | SKOR is a member of Shaker family potassium ion (K ⁺) channel. This family includes five groups based on phylogenetic analysis (FEBS Letters (2007) 581: 2357): I (inward rectifying channel): AKT1 (AT2G26650), AKT5 (AT4G32500) and SPIK (also known as AKT6, AT2G25600); II (inward rectifying channel): KAT1 (AT5G46240) and KAT2 (AT4G18290); III (weakly inward rectifying channel): AKT2 (AT4G22200); IV (regulatory subunit involved in inwardly rectifying conductance formation): KAT3 (also known as AtKC1, AT4G32650); V (outward rectifying channel): SKOR (AT3G02850) and GORK (AT5G37500). Mediates the delivery of K ⁺ from stelar cells to the xylem in the roots towards the shoot. mRNA accumulation is modulated by abscisic acid. K ⁺ gating activity is modulated by external and internal K ⁺ . Involved in response to low potassium. |
| Synonyms: | SKOR, STELAR K ⁺ OUTWARD RECTIFIER |
| Immunogen: | KLH-conjugated synthetic peptide (16 aa from Central section) derived from <i>Arabidopsis thaliana</i> SKOR (AT3G02850). |
| Form: | Lyophilized |
| Quantity: | 150 µg |
| Purification: | Immunogen affinity purified |
| Reconstitution: | Reconstitution with 150 µl of 0.01 M sterile PBS. "Note: please spin tube briefly prior to opening it to avoid any losses that might occur from lyophilized material adhering to the cap or sides of the tube". |
| Stability & Storage: | Use a manual defrost freezer and avoid repeated freeze-thaw cycles. 12 months from date of receipt, -20 to -70°C as supplied. 6 months, -20 to -70°C under sterile conditions after reconstitution. 1 month, 2 to 8°C under sterile conditions after reconstitution. |
| Shipping: | The product is shipped at 4°C. Upon receipt, store it immediately at the temperature recommended above. |

Application Information

Research Use Only

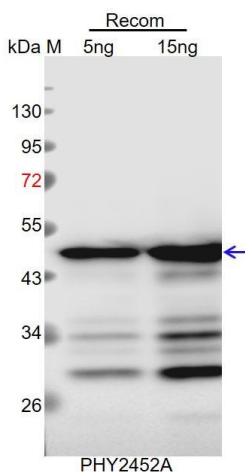
Recommended Dilution: Western Blot (1:1000-1:2000)
 Note: Optimal dilutions/concentrations should be determined by the end user.

Expected / apparent MW: 94 kDa

Confirmed Reactivity: Coming soon

Predicted Reactivity: Among species analyzed, the sequence of the synthetic peptide used for immunization is 100% homologues with the sequence in *Brassica napus*, *Brassica rapa*, and 80-99% homologues with the sequence in *Brassica rapa*, *Brassica napus*, *Setaria viridis*.
 For more species homologues information, please contact tech support at tech@phytoab.com.

Application Example



Recom: 5 ng and 15 ng recombinant protein containing the peptide for immunization and having a molecular mass of 50 kDa.

Electrophoresis: 12% SDS-PAGE.

Transfer: blotting to NC (nitrocellulose) membrane for 1 h.

Blocking: 5% skim milk at RT or 4°C for 1 h.

Primary antibody: 1:1000 dilution overnight at 4°C.

Secondary antibody: 1:10000 dilution using Goat Anti-Rabbit IgG H&L (HRP) (Cat# PHY6000).

Detection: using chemiluminescence substrate and image were captured with CCD camera.