

Anti-Glutathione synthase 2 antibody

Catalog: PHY3331A

Product Information

Description:	Rabbit polyclonal antibody
Background:	GSH2 is similar to glutathione synthetases, which catalyzes one of the early steps in glutathione biosynthesis. Two transcripts have been detected; the longer transcript is less abundant and the protein is localized to the chloroplast. The smaller transcript, in which the transit peptide is truncated, is localized to the cytosol.
Synonyms:	GSH2, ATGSH2, GLUTATHIONE SYNTHETASE 2, GSHB
Immunogen:	KLH-conjugated synthetic peptide (16 aa from C terminal section) derived from <i>Arabidopsis thaliana</i> GSH2 (AT5G27380).
Form:	Lyophilized
Quantity:	150 µg
Purification:	Immunogen affinity purified
Reconstitution:	Reconstitution with 150 µl of 0.01M sterile PBS. "Note: please spin tube briefly prior to opening it to avoid any losses that might occur from lyophilized material adhering to the cap or sides of the tube".
Stability &Storage:	Use a manual defrost freezer and avoid repeated freeze-thaw cycles. 12 months from date of receipt, -20 to -70°C as supplied. 6 months, -20 to -70°C under sterile conditions after reconstitution. 1 month, 2 to 8°C under sterile conditions after reconstitution.
Shipping:	The product is shipped at 4°C. Upon receipt, store it immediately at the temperature recommended above.

Application Information

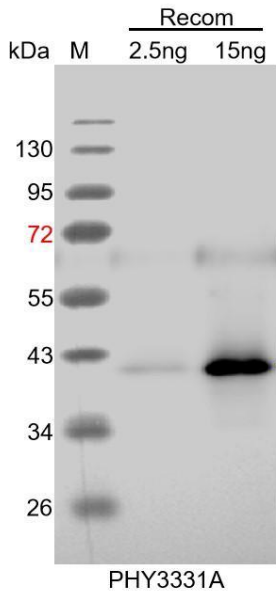
Recommended Dilution:	Western Blot (1:1000-1:2000) Note: Optimal dilutions/concentrations should be determined by the end user.
Expected / apparent MW:	60 kDa
Confirmed Reactivity:	Coming soon

Research Use Only

Predicted Reactivity:

Among species analyzed, the sequence of the synthetic peptide used for immunization is 100% homologues with the sequence in *Sorghum bicolor*, *Panicum virgatum*, and 80-99% homologues with the sequence in *Oryza sativa Indica Group*, *Zea mays*, *Populus trichocarpa*, *Oryza sativa Japonica Group*, *Spinacia oleracea*, *Spinacia oleracea*, *Setaria viridis*, *Glycine max*, *Triticum aestivum*, *Solanum tuberosum*, *Nicotiana tabacum*, *Vitis vinifera*, *Solanum lycopersicum*, *Brassica rapa*, *Brassica napus*, *Medicago truncatula*. For more species homologues information, please contact tech support at tech@phytoab.com.

Application Example



Recom: 2.5 ng and 15 ng recombinant protein containing the peptide for immunization and having a molecular mass of 40 kDa.

Electrophoresis: 12% SDS-PAGE.

Transfer: blotting to NC (nitrocellulose) membrane for 1 h.

Blocking: 5% skim milk at RT or 4°C for 1 h.

Primary antibody: 1:1000 dilution overnight at 4°C.

Secondary antibody: 1:10000 dilution using Goat Anti-Rabbit IgG H&L (HRP) (Cat# PHY6000).

Detection: using chemiluminescence substrate and image were captured with CCD camera.