

# Anti-Transcription factor TCP20 antibody

Catalog: PHY0793S

## Product Information

<b>Description:</b>	Rabbit polyclonal antibody
<b>Background:</b>	TCP20 is a transcription factor belonging to TCP-P subfamily. It has proposed that TCP20 is involved in cell division and growth coordination.
<b>Synonyms:</b>	TCP20, ARABIDOPSIS THALIANA TEOSINTE BRANCHED 1, CYCLOIDEA, PCF (TCP)-DOMAIN FAMILY PROTEIN 20, AT-TCP20, ATTCP20, PCF1, TEOSINTE BRANCHED 1, CYCLOIDEA, PCF (TCP)-DOMAIN FAMILY PROTEIN 20
<b>Immunogen:</b>	KLH-conjugated synthetic peptide of TCP20 derived from <i>Arabidopsis thaliana</i> AT3G27010.
<b>Form:</b>	Lyophilized
<b>Quantity:</b>	150 µg
<b>Purification:</b>	Serum Peptide affinity form antibody available upon request at <a href="mailto:info@phytoab.com">info@phytoab.com</a> .
<b>Reconstitution:</b>	Reconstitution with 150 µl of sterile water. "Note: please spin tube briefly prior to opening it to avoid any losses that might occur from lyophilized material adhering to the cap or sides of the tube".
<b>Stability &amp; Storage:</b>	Use a manual defrost freezer and avoid repeated freeze-thaw cycles. 12 months from date of receipt, -20 to -70°C as supplied. 6 months, -20 to -70°C under sterile conditions after reconstitution. 1 month, 2 to 8°C under sterile conditions after reconstitution.
<b>Shipping:</b>	The product is shipped at 4°C. Upon receipt, store it immediately at the temperature recommended above.

## Application Information

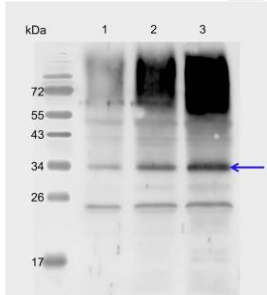
<b>Recommended Dilution:</b>	Western Blot (1:1000-1:2000) Note: Optimal dilutions/concentrations should be determined by the end user.
<b>Expected/apparent MW:</b>	33 / 34 kDa
<b>Confirmed Reactivity:</b>	<i>Arabidopsis thaliana</i>

Research Use Only

**Predicted Reactivity:**

For more species homologues information, please contact tech support at [tech@phytoab.com](mailto:tech@phytoab.com).

**Application Example**



Lane 1: 25 µg total protein from *Arabidopsis thaliana* leaf.

Lane 2: 50 µg total protein from *Arabidopsis thaliana* leaf.

Lane 3: 100 µg total protein from *Arabidopsis thaliana* leaf.

**Electrophoresis:** 15% SDS-PAGE

**Transfer:** blotting to NC (nitrocellulose) membrane for 1 h.

**Blocking:** 5% skim milk at RT or 4°C for 1 h.

**PHY0793S**

**Primary antibody:** 1:1000 dilution overnight at 4°C.

**Secondary antibody:** 1:10000 dilution using Goat Anti-Rabbit IgG H&L(HRP) (Cat# PHY6000)

**Detection:** using chemiluminescence substrate and image were captured with CCD camera.