

Anti-Putative glutathione peroxidase 7, chloroplastic antibody

Catalog: PHY1070S

Product Information

Description:	Rabbit polyclonal antibody
Background:	The plant glutathione peroxidase (GPX) family consists of multiple isoenzymes with distinct subcellular locations which exhibit different tissue-specific expression patterns and environmental stress responses. GPX7 (AT4G31870) is one of the subunit.
Synonyms:	GPX7, ATGPX7, GLUTATHIONE PEROXIDASE 7, GPXL7.
Immunogen:	KLH-conjugated synthetic peptide of GPX7 derived from <i>Arabidopsis thaliana</i> AT4G31870.
Form:	Lyophilized
Quantity:	150 µg
Purification:	Serum
Reconstitution:	Reconstitution with 150µl of sterile water. "Note: please spin tube briefly prior to opening it to avoid any losses that might occur from lyophilized material adhering to the cap or sides of the tube".
Stability & Storage:	Use a manual defrost freezer and avoid repeated freeze-thaw cycles. 12 months from date of receipt, -20 to -70°C as supplied. 6 months, -20 to -70°C under sterile conditions after reconstitution. 1 month, 2 to 8°C under sterile conditions after reconstitution.
Shipping:	The product is shipped at 4°C. Upon receipt, store it immediately at the temperature recommended above.

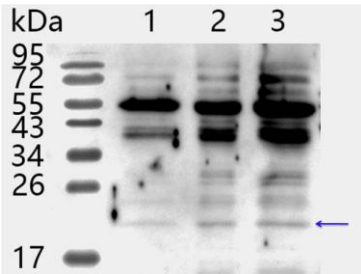
Application Information

Recommended Dilution:	Western Blot (1:1000-1:2000) Note: Optimal dilutions/concentrations should be determined by the end user.
Expected/apparent MW:	26 / 18 kDa
Confirmed Reactivity:	<i>Arabidopsis thaliana</i>
Predicted Reactivity:	The sequence of the synthetic peptide used for immunization is 93%

Research Use Only

homologues with the sequence in GPX1: (AT2G25080).
 For more species homologues information, please contact tech support at tech@phytoab.com.

Application Example



Lane 1: 3.025 µg stromal protein from *Arabidopsis thaliana* leaf.

Lane 2: 6 µg stromal protein from *Arabidopsis thaliana* leaf.

Lane 3: 12 µg stromal protein from *Arabidopsis thaliana* leaf.

Electrophoresis: 15% SDS-Urea-PAGE

Transfer: blotting to NC (nitrocellulose) membrane for 1 h.

Blocking: 5% skim milk at RT or 4°C for 1 h.

PHY1070S

Primary antibody: 1:1000 dilution overnight at 4°C.

Secondary antibody: 1:20000 dilution using Goat Anti-Rabbit IgG H&L (HRP) (Cat# PHY6000)

Detection: using chemiluminescence substrate and image were captured with CCD camera.