

Anti-Plasma membrane aquaporin 2;2/3/4/6 antibody

Catalog: PHY0673S

Product Information

Description:	Rabbit polyclonal antibody
Background:	PIP2; 2/3/4/6 are members of the plasma membrane intrinsic protein subfamily PIP2. They localize to the plasma membrane and exhibit water transport activity in <i>Xenopus</i> oocyte.
Synonyms:	PIP2; 2/3/4/6
Immunogen:	KLH-conjugated synthetic peptide of PIP2; 2/3/4/6 derived from <i>Arabidopsis thaliana</i> AT2G37170, AT2G37180, AT5G60660, AT2G39010.
Form:	Lyophilized
Quantity:	150 µg
Purification:	Serum Peptide affinity form antibody available upon request at info@phytoab.com .
Reconstitution:	Reconstitution with 150 µl of sterile water. "Note: please spin tube briefly prior to opening it to avoid any losses that might occur from lyophilized material adhering to the cap or sides of the tube".
Stability & Storage:	Use a manual defrost freezer and avoid repeated freeze-thaw cycles. 12 months from date of receipt, -20 to -70°C as supplied. 6 months, -20 to -70°C under sterile conditions after reconstitution. 1 month, 2 to 8°C under sterile conditions after reconstitution.
Shipping:	The product is shipped at 4°C. Upon receipt, store it immediately at the temperature recommended above.

Application Information

Recommended Dilution:	Western Blot (1:1000-1:2000) Note: Optimal dilutions/concentrations should be determined by the end user.
Expected/apparent MW:	30 / 27 kDa
Confirmed Reactivity:	<i>Arabidopsis thaliana</i>
Predicted Reactivity:	Among 25 analyzed species, the sequence of the synthetic peptide used for immunization is 100% homologous with the sequence in <i>Zea</i>

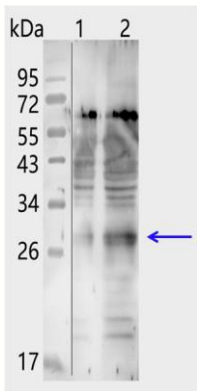
Research Use Only

mays, *Glycine max*, *Cucumis sativus*.

The sequence of the synthetic peptide used for immunization is 92% homologues with the sequence in PIP2;8 (AT2G16850) , PIP2;7 (AT4G35100), PIP2;5 (AT3G54820), PIP2;1 (AT3G53420) and 85% homologues with the sequence in PIP1;2 (AT2G45960) , PIP1;1 (AT3G61430), PIP1;3 (AT1G01620), PIP1;4 (AT4G00430), PIP1;5 (AT4G23400).

For more species homologues information, please contact tech support at tech@phytoab.com.

Application Example



Lane 1: 20 µg soluble protein from *Arabidopsis thaliana* leaf.

Lane 2: 50 µg soluble protein from *Arabidopsis thaliana* leaf.

Electrophoresis: 15% SDS-Urea-PAGE

Transfer: blotting to NC (nitrocellulose) membrane for 1 h.

Blocking: 5% skim milk at RT or 4°C for 1 h.

Primary antibody: 1:1000 dilution overnight at 4°C.

Secondary antibody: 1:20000 dilution using Goat Anti-Rabbit IgG H&L (HRP)

PHY0673S (Cat# PHY6000).

Detection: using chemiluminescence substrate and image were captured with CCD camera.