

# Anti-ATP synthase subunit 4, mitochondrial antibody

Catalog: PHY0587S

## Product Information

<b>Description:</b>	Rabbit polyclonal antibody
<b>Background:</b>	Mitochondrial F <sub>0</sub> F <sub>1</sub> -ATP synthase is also called Complex V and it synthesizes ATP from ADP and Pi using the proton motive force created by respiratory electron transport. ATP4 (ATMG00640) is a subunit of mitochondrial F <sub>0</sub> F <sub>1</sub> -ATP synthase in <i>Arabidopsis</i> .
<b>Synonyms:</b>	ATP4, ORF25
<b>Immunogen:</b>	KLH-conjugated synthetic peptide of ATP4 derived from <i>Arabidopsis thaliana</i> ATMG00640.
<b>Form:</b>	Lyophilized
<b>Quantity:</b>	150 µg
<b>Purification:</b>	Serum Peptide affinity form antibody available upon request at <a href="mailto:info@phytoab.com">info@phytoab.com</a> .
<b>Reconstitution:</b>	Reconstitution with 150 µl of sterile water. "Note: please spin tube briefly prior to opening it to avoid any losses that might occur from lyophilized material adhering to the cap or sides of the tube".
<b>Stability &amp; Storage:</b>	Use a manual defrost freezer and avoid repeated freeze-thaw cycles. 12 months from date of receipt, -20 to -70°C as supplied. 6 months, -20 to -70°C under sterile conditions after reconstitution. 1 month, 2 to 8°C under sterile conditions after reconstitution.
<b>Shipping:</b>	The product is shipped at 4°C. Upon receipt, store it immediately at the temperature recommended above.

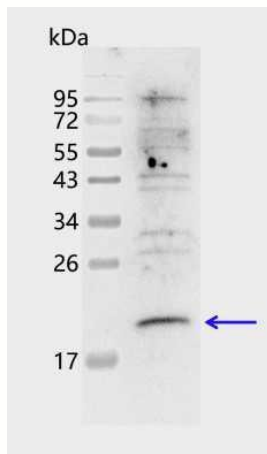
## Application Information

<b>Recommended Dilution:</b>	Western Blot (1:1000-1:5000) Note: Optimal dilutions/concentrations should be determined by the end user.
<b>Expected/apparent MW:</b>	22 / 20 kDa
<b>Confirmed Reactivity:</b>	<i>Arabidopsis thaliana</i>
<b>Predicted Reactivity:</b>	Among species analyzed, the sequence of the synthetic peptide used

Research Use Only

for immunization is 100% homologues with the sequence in *Vitis vinifera*, *Brassica rapa*, *Brassica napus*, *Solanum tuberosum*, *Nicotiana tabacum*, *Spinacia oleracea*, *Solanum lycopersicum*, *Medicago truncatula*, *Glycine max*, *Gossypium raimondii*, and 80-99% homologues with the sequence in *Triticum aestivum*. For more species homologues information, please contact tech support at [tech@phytoab.com](mailto:tech@phytoab.com).

## Application Example



**PHY0587S**

7.5 µg mitochondria protein from *Arabidopsis thaliana* leaf.

**Electrophoresis:** 15% SDS-PAGE

**Transfer:** blotting to NC (nitrocellulose) membrane for 1 h.

**Blocking:** 5% skim milk at RT or 4°C for 1 h.

**Primary antibody:** 1:5000 dilution overnight at 4°C.

**Secondary antibody:** 1:10000 dilution using Goat Anti-Rabbit IgG H&L (HRP) (Cat# PHY6000).

**Detection:** using chemiluminescence substrate and image were captured with CCD camera.