

Anti-Coatomer subunit gamma antibody

Catalog: PHY0498

Product Information

| | |
|------------------------|---|
| Description: | Rabbit polyclonal antibody |
| Background: | The coatomer is a cytosolic protein complex that binds to dilysine motifs and reversibly associates with Golgi non-clathrin-coated vesicles, which further mediate biosynthetic protein transport from the ER, via the Golgi up to the trans Golgi network. Coatomer complex is required for budding from Golgi membranes, and is essential for the retrograde Golgi-to-ER transport of dilysine-tagged proteins (By similarity). Oligomeric complex that consists of at least the alpha, beta, beta', gamma, delta, epsilon and zeta subunits. |
| Synonyms: | Gamma-COP, Gamma-coat protein |
| Immunogen: | KLH-conjugated synthetic peptide of Gamma-COP derived from <i>Arabidopsis thaliana</i> AT4G34450. |
| Form: | Lyophilized |
| Quantity: | 150 µg |
| Purification: | Protein A purified |
| Reconstitution: | Reconstitution with 150µl of 0.01M sterile PBS. "Note: please spin tube briefly prior to opening it to avoid any losses that might occur from lyophilized material adhering to the cap or sides of the tube". |
| Stability & | Use a manual defrost freezer and avoid repeated freeze-thaw cycles. |
| Storage: | 12 months from date of receipt, -20 to -70°C as supplied. 6 months, -20 to -70°C under sterile conditions after reconstitution. 1 month, 2 to 8°C under sterile conditions after reconstitution. |
| Shipping: | The product is shipped at 4°C. Upon receipt, store it immediately at the temperature recommended above. |

Application Information

| | |
|------------------------------|--|
| Recommended Dilution: | Western Blot (1:1000-1:2000) Note: Optimal dilutions/concentrations should be determined by the end user. |
| Expected/apparent MW: | 98 kDa |

Research Use Only

Confirmed Reactivity:

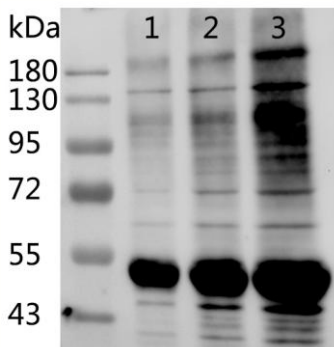
Arabidopsis thaliana

Predicted Reactivity:

Among 25 analyzed species, the sequence of the synthetic peptide used for immunization is 100% homologues with the sequence in *Brassica rapa*, and 80-99% homologues with the sequence in *Gossypium raimondii*, *Brassica rapa*.

For more species homologues information, please contact tech support at tech@phytoab.com.

Application Example



Lane 1: 21 µg soluble protein from *Arabidopsis thaliana* leaf.

Lane 2: 41 µg soluble protein from *Arabidopsis thaliana* leaf.

Lane 3: 82 µg soluble protein from *Arabidopsis thaliana* leaf.

Electrophoresis: 10% SDS –PAGE

Transfer: blotting to NC (nitrocellulose) membrane for 1 h.

Blocking: 5% skim milk at RT or 4°C for 1 h.

Primary antibody: 1:1000 dilution overnight at 4°C.

Secondary antibody: 1:20000 dilution using Goat Anti-Rabbit IgG H&L (HRP) (Cat# PHY6000)

Detection: using chemiluminescence substrate and image were captured with CCD camera.