

Anti-ribosomal protein s12 (RPS12A/RPS12B/RPS12C) antibody

Catalog: PHY0434S

Product Information

Description:	Rabbit polyclonal antibody
Background:	Ribosomal protein s12 is located in three distinct loci on the chloroplast genome and is transcribed to make one transcript.
Synonyms:	RP- S12, RIBOSOMAL PROTEIN S12, RPS12
Immunogen:	KLH-conjugated synthetic peptide of RIBOSOMAL PROTEIN S12 derived from <i>Arabidopsis thaliana</i> ATCG00065/ATCG01230/ATCG00905.
Form:	Lyophilized
Quantity:	150 µg
Purification:	Serum Peptide affinity form antibody available upon request at info@phytoab.com .
Reconstitution:	Reconstitution with 150 µl of sterile water. "Note: please spin tube briefly prior to opening it to avoid any losses that might occur from lyophilized material adhering to the cap or sides of the tube".
Stability & Storage:	Use a manual defrost freezer and avoid repeated freeze-thaw cycles. 12 months from date of receipt, -20 to -70°C as supplied. 6 months, -20 to -70°C under sterile conditions after reconstitution. 1 month, 2 to 8°C under sterile conditions after reconstitution.
Shipping:	The product is shipped at 4°C. Upon receipt, store it immediately at the temperature recommended above.

Application Information

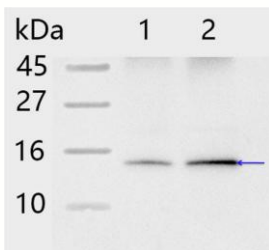
Recommended Dilution:	Western Blot (1:1000-1:2000) Note: Optimal dilutions/concentrations should be determined by the end user.
Expected/apparent MW:	15 kDa
Confirmed Reactivity:	<i>Arabidopsis thaliana</i>
Predicted Reactivity:	Among 25 analyzed species, the sequence of the synthetic peptide used for immunization is 100% homologous with the sequence in

Research Use Only

Solanum lycopersicum, *Medicago truncatula*, *Medicago truncatula*, *Solanum tuberosum*, *Glycine max*, *Glycine max*, *Physcomitrella patens*, and 80-99% homologues with the sequence in *Populus trichocarpa*, *Populus trichocarpa*, *Chlamydomonas reinhardtii*, *Zea mays*, *Oryza sativa Japonica Group*, *Panicum virgatum*, *Oryza sativa Indica Group*.

For more species homologues information, please contact tech support at tech@phytoab.com.

Application Example



Lane 1: 11.4 µg stromal protein from *Arabidopsis thaliana* leaf.

Lane 2: 17.1 µg stromal protein from *Arabidopsis thaliana* leaf.

Electrophoresis: Tricine-SDS-PAGE

Transfer: blotting to NC (nitrocellulose) membrane for 1 h.

Blocking: 5% skim milk at RT or 4°C for 1 h.

PHY0434S

Primary antibody: 1:2000 dilution overnight at 4°C.

Secondary antibody: 1:20000 dilution using Goat Anti-Rabbit IgG H&L (HRP) (Cat# PHY6000).

Detection: using chemiluminescence substrate and image were captured with CCD camera.