

# Anti-Chaperonin 60 subunit alpha 1, chloroplastic antibody

Catalog: PHY0370S

## Product Information

<b>Description:</b>	Rabbit polyclonal antibody
<b>Background:</b>	Type I chaperonins are large, double ring complexes involved in mediating the folding of unfolded proteins. In chloroplasts, chaperonin complex is designated Cpn60 complex. In Arabidopsis, two Cpn60 $\alpha$ subunits and four Cpn60 $\beta$ subunits are present. Cpn60 $\alpha$ 1 (AT2G28000) is the main subunit of the Cpn60 complex in chloroplasts.
<b>Synonyms:</b>	CPN60A1, CH-CPN60A, CHAPERONIN-60ALPHA, CHAPERONIN-60ALPHA1, CHLOROPLAST CHAPERONIN 60ALPHA, CPN60A, CPN60ALPHA1, SCHLEPPERLESS, SLP.
<b>Immunogen:</b>	KLH-conjugated synthetic peptide of CPN60A1 derived from <i>Arabidopsis thaliana</i> AT2G28000.
<b>Form:</b>	Lyophilized
<b>Quantity:</b>	150 $\mu$ g
<b>Purification:</b>	Serum Peptide affinity form antibody available upon request at <a href="mailto:info@phytoab.com">info@phytoab.com</a> .
<b>Reconstitution:</b>	Reconstitution with 150 $\mu$ l of sterile water. "Note: please spin tube briefly prior to opening it to avoid any losses that might occur from lyophilized material adhering to the cap or sides of the tube".
<b>Stability &amp; Storage:</b>	Use a manual defrost freezer and avoid repeated freeze-thaw cycles. 12 months from date of receipt, -20 to -70 $^{\circ}$ C as supplied. 6 months, -20 to -70 $^{\circ}$ C under sterile conditions after reconstitution. 1 month, 2 to 8 $^{\circ}$ C under sterile conditions after reconstitution.
<b>Shipping:</b>	The product is shipped at 4 $^{\circ}$ C. Upon receipt, store it immediately at the temperature recommended above.

## Application Information

<b>Recommended Dilution:</b>	Western Blot (1:1000-1:2000) Note: Optimal dilutions/concentrations should be determined by the end user.
------------------------------	--

Research Use Only

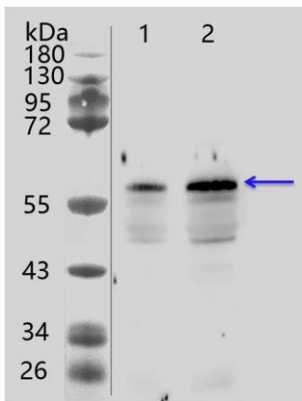
**Expected/apparent MW:** 62 / 56 kDa

**Confirmed Reactivity:** *Arabidopsis thaliana*

**Predicted Reactivity:** For more species homologues information, please contact tech support at [tech@phytoab.com](mailto:tech@phytoab.com).

## Application Example

### Example 1



**PHY0370S**

Lane 1: 6 µg stromal protein from *Arabidopsis thaliana* leaf.

Lane 2: 12 µg stromal protein from *Arabidopsis thaliana* leaf.

**Electrophoresis:** 12.5% SDS-Urea-PAGE

**Transfer:** blotting to NC (nitrocellulose) membrane for 1 h.

**Blocking:** 5% skim milk at RT or 4°C for 1 h.

**Primary antibody:** 1:2000 dilution overnight at 4°C.

**Secondary antibody:** 1:20000 dilution using Goat Anti-Rabbit IgG H&L (HRP) (Cat# PHY6000).

**Detection:** using chemiluminescence substrate and image were captured with CCD camera.

### Example 2

Sample: recombinant protein.

