

Anti-Phytochrome interacting factor 4 antibody

Catalog: PHY0262S

Product Information

Description:	Rabbit polyclonal antibody
Background:	PIF4 is a bHLH transcription factor which plays a major role in the multiple signal integration for plant growth regulation. PIF4 is a positive regulator in cell elongation and its activity is regulated by various environmental signals, including light and temperature, and hormonal signals, including auxin, gibberellic acid and brassinosteroid, both transcriptionally and post-translationally.
Synonyms:	PIF4, ATPIF4, SRL2
Immunogen:	KLH-conjugated synthetic peptide of PIF4 derived from <i>Arabidopsis thaliana</i> AT2G43010.
Form:	Lyophilized
Quantity:	150 µg
Purification:	Serum Peptide affinity form antibody available upon request at info@phytoab.com .
Reconstitution:	Reconstitution with 150 µl of sterile water. "Note: please spin tube briefly prior to opening it to avoid any losses that might occur from lyophilized material adhering to the cap or sides of the tube".
Stability &	Use a manual defrost freezer and avoid repeated freeze-thaw cycles.
Storage:	12 months from date of receipt, -20 to -70°C as supplied. 6 months, -20 to -70°C under sterile conditions after reconstitution. 1 month, 2 to 8°C under sterile conditions after reconstitution.
Shipping:	The product is shipped at 4°C. Upon receipt, store it immediately at the temperature recommended above.

Application Information

Recommended Dilution:	Western Blot (1:1000-1:2000) Note: Optimal dilutions/concentrations should be determined by the end user.
Expected/apparent MW:	48 kDa

Research Use Only

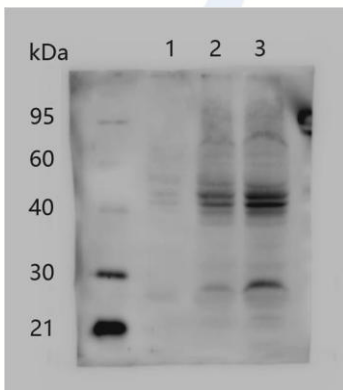
Confirmed Reactivity:

Arabidopsis thaliana

Predicted Reactivity:

For more species homologues information, please contact tech support at tech@phytoab.com.

Application Example



Lane 1: 10 µg total protein from *Arabidopsis thaliana* leaf.

Lane 2: 50 µg total protein from *Arabidopsis thaliana* leaf.

Lane 3: 100 µg total protein from *Arabidopsis thaliana* leaf.

Electrophoresis: 15% SDS-Urea-PAGE

Transfer: blotting to NC (nitrocellulose) membrane for 1 h.

Blocking: 5% skim milk at RT or 4°C for 1 h.

Primary antibody: 1:1000 dilution overnight at 4°C.

Secondary antibody: 1:20000 dilution using Goat Anti-Rabbit IgG H&L (HRP) (Cat# PHY6000).

Detection: using chemiluminescence substrate and image were captured with CCD camera.