

Anti-DELLA protein RGA antibody

Catalog: PHY0242S

Product Information

Description:	Rabbit polyclonal antibody
Background:	The ability of plants to provide a plastic response to environmental cues relies on the connectivity between signaling pathways. DELLA proteins act as hubs that relay environmental information to the multiple transcriptional circuits that control growth and development through physical interaction with transcription factors from different families.
Synonyms:	DELLA protein RGA, REPRESSOR OF GA, REPRESSOR OF GA1-3 1, RGA, RGA1
Immunogen:	KLH-conjugated synthetic peptide of DELLA protein RGA derived from <i>Arabidopsis thaliana</i> AT2G01570.
Form:	Lyophilized
Quantity:	150 µg
Purification:	Serum Peptide affinity form antibody available upon request at info@phytoab.com .
Reconstitution:	Reconstitution with 150 µl of sterile water. "Note: please spin tube briefly prior to opening it to avoid any losses that might occur from lyophilized material adhering to the cap or sides of the tube".
Stability &	Use a manual defrost freezer and avoid repeated freeze-thaw cycles.
Storage:	12 months from date of receipt, -20 to -70°C as supplied. 6 months, -20 to -70°C under sterile conditions after reconstitution. 1 month, 2 to 8°C under sterile conditions after reconstitution.
Shipping:	The product is shipped at 4°C. Upon receipt, store it immediately at the temperature recommended above.

Application Information

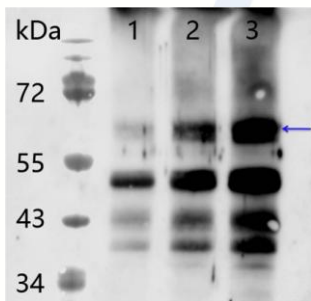
Recommended Dilution:	Western Blot (1:1000-1:2000) Note: Optimal dilutions/concentrations should be determined by the end user.
Expected/apparent MW:	64 kDa

Research Use Only

Confirmed Reactivity: *Arabidopsis thaliana*

Predicted Reactivity: For more species homologues information, please contact tech support at tech@phytoab.com.

Application Example



Lane 1: 25 µg total protein from *Arabidopsis thaliana* leaf.

Lane 2: 50 µg total protein from *Arabidopsis thaliana* leaf.

Lane 3: 100 µg total protein from *Arabidopsis thaliana* leaf.

Electrophoresis: 12.5% SDS-Urea-PAGE

Transfer: blotting to NC (nitrocellulose) membrane for 1 h.

Blocking: 5% skim milk at RT or 4°C for 1 h.

PHY0242S

Primary antibody: 1:1000 dilution overnight at 4°C.

Secondary antibody: 1:20000 dilution using Goat Anti-Rabbit IgG H&L (HRP) (Cat# PHY6000).

Detection: using chemiluminescence substrate and image were captured with CCD camera.