

Anti-Peptidyl-prolyl cis-trans isomerase CYP37, chloroplastic antibody

Catalog: PHY0206A

Product Information

Description:	Rabbit polyclonal antibody
Background:	CYP37 is one of Cyclophilin-like peptidyl-prolyl cis-trans isomerase family protein. AtCYP37 has been detected in both luminal and thylakoid membrane proteomes. AtCYP37 may have forfeited the PPIase function in order to carry out novel roles within this catalytically suboptimal cellular environment.
Synonyms:	CYP37, PPIase CYP37
Immunogen:	KLH-conjugated synthetic peptide of CYP37 derived from <i>Arabidopsis thaliana</i> AT3G15520.
Form:	Lyophilized
Quantity:	150 µg
Purification:	Immunogen affinity purified
Reconstitution:	Reconstitution with 150µl of 0.01M sterile PBS. "Note: please spin tube briefly prior to opening it to avoid any losses that might occur from lyophilized material adhering to the cap or sides of the tube".
Stability & Storage:	Use a manual defrost freezer and avoid repeated freeze-thaw cycles. 12 months from date of receipt, -20 to -70°C as supplied. 6 months, -20 to -70°C under sterile conditions after reconstitution. 1 month, 2 to 8°C under sterile conditions after reconstitution.
Shipping:	The product is shipped at 4°C. Upon receipt, store it immediately at the temperature recommended above.

Application Information

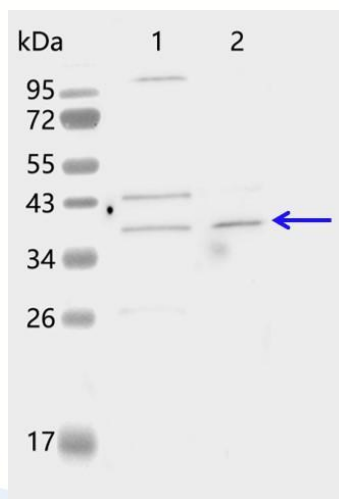
Recommended Dilution:	Western Blot (1:1000-1:2000) Note: Optimal dilutions/concentrations should be determined by the end user.
Expected/apparent MW:	50 / 38 kDa
Confirmed Reactivity:	<i>Arabidopsis thaliana</i>
Predicted Reactivity:	Among species analyzed, the sequence of the synthetic peptide used

Research Use Only

for immunization is 100% homologues with the sequence in *Brassica rapa*, *Brassica napus*, and 80-99% homologues with the sequence in *Physcomitrium patens*, *Vitis vinifera*, *Populus trichocarpa*, *Cucumis sativus*, *Spinacia oleracea*, *Gossypium raimondii*, *Glycine max*, *Medicago truncatula*, *Sorghum bicolor*, *Nicotiana tabacum*, *Solanum lycopersicum*, *Solanum tuberosum*.

For more species homologues information, please contact tech support at tech@phytoab.com.

Application Example



PHY0206A
with CCD camera.

Lane 1: 10 µl total chloroplast protein from *Arabidopsis thaliana*.

Lane 2: Thylakoid membrane protein from *Arabidopsis thaliana* containing 2.5 µg of chlorophyll.

Electrophoresis: 15% SDS-PAGE

Transfer: blotting to NC (nitrocellulose) membrane for 1 h.

Blocking: 5% skim milk at RT or 4°C for 1 h.

Primary antibody: 1:1000 dilution overnight at 4°C.

Secondary antibody: 1:10000 dilution using Goat Anti-Rabbit IgG H&L(HRP) (Cat# PHY6000).

Detection: using chemiluminescence substrate and image were captured