

Anti-Nuclear cap-binding protein subunit 2 antibody

Catalog: PHY0198S

Product Information

Description:	Rabbit polyclonal antibody
Background:	CBP20 is a nuclear cap-binding protein that forms a heterodimeric complex with ABH1 (AT2G13540) and is likely to participate in RNA metabolism. It recognizes and binds capped RNAs (m7GpppG-capped RNA) but requires ABH1/CBP80 to stabilize the movement of its N-terminal loop and lock the CBC into a high affinity cap-binding state with the cap structure.
Synonyms:	CBP20, ATCBP20, CAP-BINDING PROTEIN 20
Immunogen:	KLH-conjugated synthetic peptide of CBP20 derived from <i>Arabidopsis thaliana</i> AT5G44200.
Form:	Lyophilized
Quantity:	150 µg
Purification:	Serum Peptide affinity form antibody available upon request at info@phytoab.com .
Reconstitution:	Reconstitution with 150 µl of sterile water. "Note: please spin tube briefly prior to opening it to avoid any losses that might occur from lyophilized material adhering to the cap or sides of the tube".
Stability & Storage:	Use a manual defrost freezer and avoid repeated freeze-thaw cycles. 12 months from date of receipt, -20 to -70°C as supplied. 6 months, -20 to -70°C under sterile conditions after reconstitution. 1 month, 2 to 8°C under sterile conditions after reconstitution.
Shipping:	The product is shipped at 4°C. Upon receipt, store it immediately at the temperature recommended above.

Application Information

Recommended Dilution:	Western Blot (1:1000-1:2000) Note: Optimal dilutions/concentrations should be determined by the end user.
Expected/apparent MW:	30 / 26 kDa
Confirmed Reactivity:	<i>Arabidopsis thaliana</i>

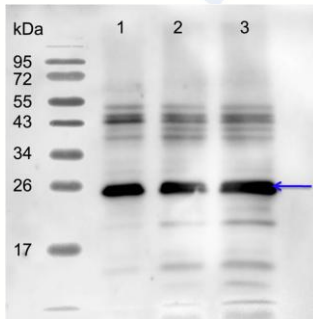
Research Use Only

Predicted Reactivity:

Among 25 analyzed species, the sequence of the synthetic peptide used for immunization is 80-99% homologues with the sequence in *Medicago truncatula*.

For more species homologues information, please contact tech support at tech@phytoab.com.

Application Example



Lane 1: 10 µg total protein from *Arabidopsis thaliana* leaf.

Lane 2: 25 µg total protein from *Arabidopsis thaliana* leaf.

Lane 3: 50 µg total protein from *Arabidopsis thaliana* leaf.

Electrophoresis: 15% SDS-Urea-PAGE

Transfer: blotting to NC (nitrocellulose) membrane for 1 h.

Blocking: 5% skim milk at RT or 4°C for 1 h.

PHY0198S

Primary antibody: 1:1000 dilution overnight at 4°C.

Secondary antibody: 1:10000 dilution using Goat Anti-Rabbit IgG H&L(HRP) (Cat# PHY6000)

Detection: using chemiluminescence substrate and image were captured with CCD camera.