

Anti-SNF1-related protein kinase regulatory subunit beta-2 antibody

Catalog: PHY0172S

Product Information

Description:	Rabbit polyclonal antibody
Background:	The active SnRK1 (Sucrose non-fermenting-1-related protein kinase) form is usually a heterotrimeric complex. Subcellular localization and specific target of the SnRK1 kinase are regulated by specific beta subunits. In Arabidopsis, there are at least seven genes encoding beta subunits, AKINbeta2, one of the SnRK1 kinase is involved in the specificity of interaction of the kinase with the cytosolic nitrate reductase.
Synonyms:	KINβ2, AKINB2
Immunogen:	KLH-conjugated synthetic peptide of KINβ2 derived from <i>Arabidopsis thaliana</i> AT4G16360.
Form:	Lyophilized
Quantity:	150 μg
Purification:	Serum Peptide affinity form antibody available upon request at info@phytoab.com .
Reconstitution:	Reconstitution with 150 μl of sterile water. "Note: please spin tube briefly prior to opening it to avoid any losses that might occur from lyophilized material adhering to the cap or sides of the tube".
Stability & Storage:	Use a manual defrost freezer and avoid repeated freeze-thaw cycles. 12 months from date of receipt, -20 to -70°C as supplied. 6 months, -20 to -70°C under sterile conditions after reconstitution. 1 month, 2 to 8°C under sterile conditions after reconstitution.
Shipping:	The product is shipped at 4°C. Upon receipt, store it immediately at the temperature recommended above.

Application Information

Recommended Dilution:	Western Blot (1:1000-1:2000) Note: Optimal dilutions/concentrations should be determined by the end user.
Expected/apparent MW:	29 / 34 kDa

Research Use Only

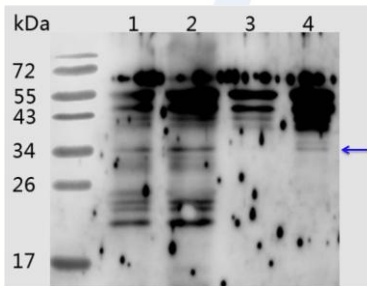
Confirmed Reactivity:

Arabidopsis thaliana

Predicted Reactivity:

For more species homologues information, please contact tech support at tech@phytoab.com.

Application Example



Lane 1: 20 µg total protein from *Arabidopsis thaliana* leaf.

Lane 2: 40 µg total protein from *Arabidopsis thaliana* leaf.

Lane 3: 3 µg stromal protein from *Arabidopsis thaliana* leaf.

Lane 4: 6 µg stromal protein from *Arabidopsis thaliana* leaf.

Electrophoresis: 15% SDS-Urea-PAGE

PHY0172S

Transfer: blotting to NC (nitrocellulose) membrane for 1 h.

Blocking: 5% skim milk at RT or 4°C for 1 h.

Primary antibody: 1:1000 dilution overnight at 4°C.

Secondary antibody: 1:10000 dilution using Goat Anti-Rabbit IgG H&L(HRP) (Cat# PHY6000)

Detection: using chemiluminescence substrate and image were captured with CCD camera.