

Anti-Cytosolic class I heat shock protein 17.6 antibody

Catalog: PHY0149S

Product Information

Description:	Rabbit polyclonal antibody
Background:	HSP17.6C belongs to HSP20-like chaperones superfamily protein, it located in cytoplasm and is involved in response to heat.
Synonyms:	HSP17.6C, 17.6 kDa class I heat shock protein 3, AtHsp17.6C
Immunogen:	KLH-conjugated synthetic peptide of HSP17.6C derived from <i>Arabidopsis thaliana</i> AT1G53540.
Form:	Lyophilized
Quantity:	150 µg
Purification:	Serum Peptide affinity form antibody available upon request at info@phytoab.com .
Reconstitution:	Reconstitution with 150 µl of sterile water. "Note: please spin tube briefly prior to opening it to avoid any losses that might occur from lyophilized material adhering to the cap or sides of the tube".
Stability & Storage:	Use a manual defrost freezer and avoid repeated freeze-thaw cycles. 12 months from date of receipt, -20 to -70°C as supplied. 6 months, -20 to -70°C under sterile conditions after reconstitution. 1 month, 2 to 8°C under sterile conditions after reconstitution.
Shipping:	The product is shipped at 4°C. Upon receipt, store it immediately at the temperature recommended above.

Application Information

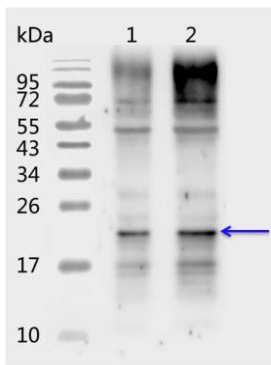
Recommended Dilution:	Western Blot (1:1000-1:2000) Note: Optimal dilutions/concentrations should be determined by the end user.
Expected/apparent MW:	17.6 / 20 kDa
Confirmed Reactivity:	<i>Arabidopsis thaliana</i>
Predicted Reactivity:	Among 25 analyzed species, the sequence of the synthetic peptide used for immunization is 80-99% homologues with the sequence in <i>Solanum tuberosum</i> , <i>Medicago truncatula</i> .

Research Use Only

The sequence of the synthetic peptide used for immunization is 85% homologous with the sequence in AT2G29500, HSP17.4 (AT3G46230), HSP18.2 (AT5G59720) and AT1G07400.

For more species homologues information, please contact tech support at tech@phytoab.com.

Application Example



Lane 1: 25 µg total protein from *Arabidopsis thaliana* leaf treated with heat.

Lane 2: 50 µg total protein from *Arabidopsis thaliana* leaf treated with heat.

Electrophoresis: 15% SDS-PAGE

Transfer: blotting to NC (nitrocellulose) membrane for 1 h.

Blocking: 5% skim milk at RT or 4°C for 1 h.

Primary antibody: 1:1000 dilution overnight at 4°C.

Secondary antibody: 1:10000 dilution using Goat Anti-Rabbit IgG H&L(HRP)

PHY0149S

(Cat# PHY6000).

Detection: using chemiluminescence substrate and image were captured with CCD camera.