

# Anti-Photosystem I assembly factor PSA3, chloroplastic antibody

Catalog: PHY2204

## Product Information

<b>Description:</b>	Rabbit polyclonal antibody
<b>Background:</b>	Photosystem I (PSI) is a large protein-pigment complex located in the thylakoid membrane in cyanobacteria, plants, and algae. Photosystem I Assembly 3 (PSA3) is conserved among green photosynthetic eukaryotes and is required for PSI accumulation. PSA3 maybe cooperate with PYG7 to promote the stable assembly of PSI, and that the PsaC subunit is likely to be the primary target of their action.
<b>Synonyms:</b>	PSA3, PDE329, PHOTOSYSTEM I ASSEMBLY 3, PIGMENT DEFECTIVE 329
<b>Immunogen:</b>	Recombinant protein of PSA3 derived from <i>Arabidopsis thaliana</i> AT3G55250.
<b>Form:</b>	Lyophilized
<b>Quantity:</b>	150 µg
<b>Purification:</b>	Protein A purified
<b>Reconstitution:</b>	Reconstitution with 150 µl of 0.01 M sterile PBS. "Note: please spin tube briefly prior to opening it to avoid any losses that might occur from lyophilized material adhering to the cap or sides of the tube".
<b>Stability &amp; Storage:</b>	Use a manual defrost freezer and avoid repeated freeze-thaw cycles. 12 months from date of receipt, -20 to -70°C as supplied. 6 months, -20 to -70°C under sterile conditions after reconstitution. 1 month, 2 to 8°C under sterile conditions after reconstitution.
<b>Shipping:</b>	The product is shipped at 4°C. Upon receipt, store it immediately at the temperature recommended above.

## Application Information

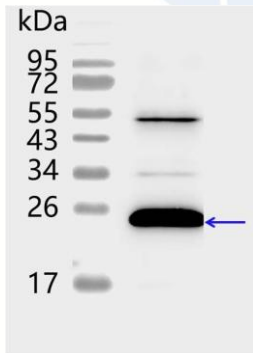
<b>Recommended Dilution:</b>	Western Blot (1:1000-1:5000) Note: Optimal dilutions/concentrations should be determined by the end user.
<b>Expected/apparent MW:</b>	31 / 25 kDa
<b>Confirmed Reactivity:</b>	<i>Arabidopsis thaliana</i>

Research Use Only

**Predicted Reactivity:**

For more species homologues information, please contact tech support at [tech@phytoab.com](mailto:tech@phytoab.com).

**Application Example**



20 µg total chloroplast protein from *Arabidopsis thaliana* leaf.

**Electrophoresis:** 15% SDS-PAGE

**Transfer:** blotting to NC (nitrocellulose) membrane for 1 h.

**Blocking:** 5% skim milk at RT or 4°C for 1 h.

**Primary antibody:** 1:5000 dilution overnight at 4°C.

**Secondary antibody:** 1:10000 dilution using Goat Anti-Rabbit IgG H&L(HRP)

**PHY2204**

(Cat# PHY6000).

**Detection:** using chemiluminescence substrate and image were captured with CCD camera.