

Anti-Gamma glutamylcysteine synthase antibody

Catalog: PHY0136A

Product Information

Description:	Rabbit polyclonal antibody
Background:	Gamma-Glutamylcysteine synthetase is one of the enzymes of glutathione (GSH) synthesis. It seems to play an important role in controlling the expression of resistance responses like the regulation of salicylic acid (SA) and phytoalexin (camalexin) production. It is Also participates in the detoxification process, the antioxidant response and is essential for embryo development and proper seed maturation.
Synonyms:	GSH1, Gamma-ECS, ATECS1, ATGSH1, CAD2, CADMIUM SENSITIVE 2, GLUTAMATE-CYSTEINE LIGASE, GSHA, PAD2, PHYTOALEXIN DEFICIENT 2, RML1, ROOT MERISTEMLESS 1
Immunogen:	KLH-conjugated synthetic peptide of GSH1 derived from <i>Arabidopsis thaliana</i> AT4G23100.
Form:	Lyophilized
Quantity:	150 µg
Purification:	Immunogen affinity purified
Reconstitution:	Reconstitution with 150 µl of 0.01 M sterile PBS. "Note: please spin tube briefly prior to opening it to avoid any losses that might occur from lyophilized material adhering to the cap or sides of the tube".
Stability & Storage:	Use a manual defrost freezer and avoid repeated freeze-thaw cycles. 12 months from date of receipt, -20 to -70°C as supplied. 6 months, -20 to -70°C under sterile conditions after reconstitution. 1 month, 2 to 8°C under sterile conditions after reconstitution.
Shipping:	The product is shipped at 4°C. Upon receipt, store it immediately at the temperature recommended above.

Application Information

Recommended Dilution:	Western Blot (1:1000-1:2000) Note: Optimal dilutions/concentrations should be determined by the end user.
Expected/apparent MW:	59 / 51 kDa

Research Use Only

Confirmed Reactivity:

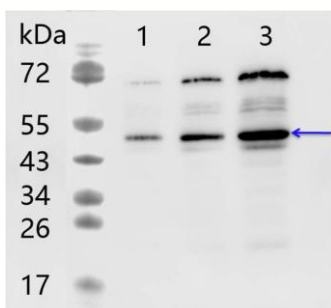
Arabidopsis thaliana

Predicted Reactivity:

Among 25 analyzed species, the sequence of the synthetic peptide used for immunization is 80-99% homologues with the sequence in *Brassica napus*, *Brassica rapa subsp. Chinensis*, *Zea mays*, *Oryza sativa Japonica Group*, *Triticum aestivum*.

For more species homologues information, please contact tech support at tech@phytoab.com.

Application Example



Lane 1: 10 µg total protein from *Arabidopsis thaliana* leaf.

Lane 2: 25 µg total protein from *Arabidopsis thaliana* leaf.

Lane 3: 50 µg total protein from *Arabidopsis thaliana* leaf.

Electrophoresis: 15% SDS-Urea-PAGE

Transfer: blotting to NC (nitrocellulose) membrane for 1 h.

Blocking: 5% skim milk at RT or 4°C for 1 h.

Primary antibody: 1:2000 dilution overnight at 4°C.

Secondary antibody: 1:20000 dilution using Goat Anti-Rabbit IgG H&L (HRP) (Cat# PHY6000).

Detection: using chemiluminescence substrate and image were captured with CCD camera.