

Anti-GLABRA2 expression modulator antibody

Catalog: PHY1782S

Product Information

Description:	Rabbit polyclonal antibody
Background:	GEM involves in the spatial control of cell division, patterning and differentiation of Arabidopsis root epidermal cells. It interacts with CDT1 and TTG1 (TRANSPARENT TESTA GLABRA1) to participate in GL2-dependent cell fate decision.
Synonyms:	GEM, GL2-EXPRESSION MODULATOR
Immunogen:	KLH-conjugated synthetic peptide derived from N-terminal section of GEM protein in <i>Arabidopsis thaliana</i> AT2G22475.
Form:	Lyophilized
Quantity:	150 µg
Purification:	Serum Peptide affinity form antibody available upon request at info@phytoab.com .
Reconstitution:	Reconstitution with 150 µl of sterile water. "Note: please spin tube briefly prior to opening it to avoid any losses that might occur from lyophilized material adhering to the cap or sides of the tube".
Stability & Storage:	Use a manual defrost freezer and avoid repeated freeze-thaw cycles. 12 months from date of receipt, -20 to -70°C as supplied. 6 months, -20 to -70°C under sterile conditions after reconstitution. 1 month, 2 to 8°C under sterile conditions after reconstitution.
Shipping:	The product is shipped at 4°C. Upon receipt, store it immediately at the temperature recommended above.

Application Information

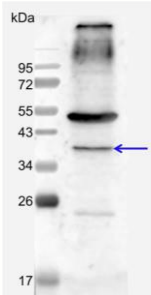
Recommended Dilution:	Western Blot (1:1000-1:2000) Note: Optimal dilutions/concentrations should be determined by the end user.
Expected/apparent MW:	32 / 37 kDa
Confirmed Reactivity:	<i>Arabidopsis thaliana</i>

Research Use Only

Predicted Reactivity:

For more species homologues information, please contact tech support at tech@phytoab.com.

Application Example



18 µg total protein from *Arabidopsis thaliana* leaf.

Electrophoresis: 15% SDS-PAGE

Transfer: blotting to NC (nitrocellulose) membrane for 1 h.

Blocking: 5% skim milk at RT or 4°C for 1 h.

Primary antibody: 1:1000 dilution overnight at 4°C.

PHY1782S Secondary antibody: 1:10000 dilution using Goat Anti-Rabbit IgG H&L(HRP) (Cat# PHY6000).

Detection: using chemiluminescence substrate and image were captured with CCD camera.