

Anti-B-box zinc finger protein 21 antibody

Catalog: PHY1959S

Product Information

Description:	Rabbit polyclonal antibody
Background:	B-box (BBX) proteins are zinc-finger transcription factors containing one or two B-box motifs. BBX proteins act as key factors in the networks regulating growth and development. BBX21 acts downstream of COP1 (AT2G32950) and play an important role in early and long-term adjustment of the shade avoidance syndrome (SAS) responses in natural environments.
Synonyms:	BBX21, ATBBX21, B BOX 21, B-BOX DOMAIN PROTEIN 21, LHUS, LONG HYPOCOTYL UNDER SHADE, SALT TOLERANCE HOMOLOG2, STH2
Immunogen:	KLH-conjugated synthetic peptide derived from C-terminal section of BBX21 in <i>Arabidopsis thaliana</i> AT1G75540.
Form:	Lyophilized
Quantity:	150 µg
Purification:	Serum Peptide affinity form antibody available upon request at info@phytoab.com .
Reconstitution:	Reconstitution with 150 µl of sterile water. "Note: please spin tube briefly prior to opening it to avoid any losses that might occur from lyophilized material adhering to the cap or sides of the tube".
Stability &	Use a manual defrost freezer and avoid repeated freeze-thaw cycles.
Storage:	12 months from date of receipt, -20 to -70°C as supplied. 6 months, -20 to -70°C under sterile conditions after reconstitution. 1 month, 2 to 8°C under sterile conditions after reconstitution.
Shipping:	The product is shipped at 4°C. Upon receipt, store it immediately at the temperature recommended above.

Application Information

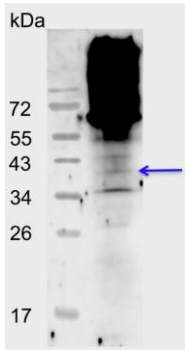
Recommended Dilution:	Western Blot (1:1000-1:2000) Note: Optimal dilutions/concentrations should be determined by the end user.
Expected/apparent MW:	37 kDa

Research Use Only

Confirmed Reactivity: *Arabidopsis thaliana*

Predicted Reactivity: For more species homologues information, please contact tech support at tech@phytoab.com.

Application Example



4 µg nuclear protein from *Arabidopsis thaliana*.

Electrophoresis: 15% SDS-PAGE

Transfer: blotting to NC (nitrocellulose) membrane for 1 h.

Blocking: 5% skim milk at RT or 4°C for 1 h.

Primary antibody: 1:1000 dilution overnight at 4°C.

Secondary antibody: 1:10000 dilution using Goat Anti-Rabbit IgG H&L(HRP)

PHY1959S (Cat# PHY6000).

Detection: using chemiluminescence substrate and image were captured with CCD camera.