

Anti-Serine/threonine-protein kinase STN8, chloroplastic antibody

Catalog: PHY0210A

Product Information

Description:	Rabbit polyclonal antibody
Background:	Chloroplast thylakoid protein kinase STN8 is specific in phosphorylation of N-terminal threonine residues in D1, D2 and CP43 proteins, and Thr-4 in PsbH protein of photosystem II. Phosphorylation of Thr-4 in the wild type required both light and prior phosphorylation at Thr-2.
Synonyms:	STN8, STATE TRANSITION 8, STN8 kinase
Immunogen:	KLH-conjugated synthetic peptide of STN8 kinase derived from <i>Arabidopsis thaliana</i> AT5G01920.
Form:	Lyophilized
Quantity:	150 µg
Purification:	Immunogen affinity purified
Reconstitution:	Reconstitution with 150 µl of 0.01 M sterile PBS. "Note: please spin tube briefly prior to opening it to avoid any losses that might occur from lyophilized material adhering to the cap or sides of the tube".
Stability & Storage:	Use a manual defrost freezer and avoid repeated freeze-thaw cycles. 12 months from date of receipt, -20 to -70°C as supplied. 6 months, -20 to -70°C under sterile conditions after reconstitution. 1 month, 2 to 8°C under sterile conditions after reconstitution.
Shipping:	The product is shipped at 4°C. Upon receipt, store it immediately at the temperature recommended above.

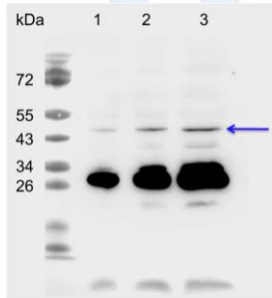
Application Information

Recommended Dilution:	Western Blot (1:1000-1:2000) Note: Optimal dilutions/concentrations should be determined by the end user.
Expected/apparent MW:	55 / 46 kDa
Confirmed Reactivity:	<i>Arabidopsis thaliana</i>
Predicted Reactivity:	For more species homologues information, please contact tech

Research Use Only

support at tech@phytoab.com.

Application Example



1-3 is thylakoid membrane protein from *Arabidopsis thaliana* leaf containing 1.25 µg, 2.5 µg, and 5 µg of chlorophyll, respectively.

Electrophoresis: 15% SDS-Urea-PAGE

Transfer: blotting to NC (nitrocellulose) membrane for 1 h.

Blocking: 5% skim milk at RT or 4°C for 1 h.

PHY0210A

Primary antibody: 1:1000 dilution overnight at 4°C.

Secondary antibody: 1:10000 dilution using Goat Anti-Rabbit IgG H&L (HRP) (Cat# PHY6000).

Detection: using chemiluminescence substrate and image were captured with CCD camera.