

Anti-Epsilon subunit of tonoplast H⁺ATPase antibody

Catalog: PHY0078A

Product Information

Description:	Rabbit polyclonal antibody
Background:	Vacuolar H ⁺ -ATPase subunit E isoform 1 is required for Golgi organization and vacuole function in embryogenesis.
Synonyms:	VHA-E1, EMB2448, EMBRYO DEFECTIVE 2448, TUF, TUFF, VACUOLAR ATP SYNTHASE SUBUNIT E1, VHAE1
Immunogen:	KLH-conjugated synthetic peptide of VHA-E1 derived from <i>Arabidopsis thaliana</i> AT4G11150.
Form:	Lyophilized
Quantity:	150 µg
Purification:	Immunogen affinity purified
Reconstitution:	Reconstitution with 150µl of 0.01M sterile PBS. "Note: please spin tube briefly prior to opening it to avoid any losses that might occur from lyophilized material adhering to the cap or sides of the tube".
Stability & Storage:	Use a manual defrost freezer and avoid repeated freeze-thaw cycles. 12 months from date of receipt, -20 to -70°C as supplied. 6 months, -20 to -70°C under sterile conditions after reconstitution. 1 month, 2 to 8°C under sterile conditions after reconstitution.
Shipping:	The product is shipped at 4°C. Upon receipt, store it immediately at the temperature recommended above.

Application Information

Recommended Dilution:	Western Blot (1:1000-1:2000) Note: Optimal dilutions/concentrations should be determined by the end user.
Expected/apparent MW:	26 / 27 kDa
Confirmed Reactivity:	<i>Arabidopsis thaliana</i>
Predicted Reactivity:	Among species analyzed, the sequence of the synthetic peptide used for immunization is 100% homologues with the sequence in <i>Brassica rapa</i> , <i>Brassica napus</i> , and 80-99% homologues with the sequence in <i>Triticum aestivum</i> , <i>Gossypium raimondii</i> , <i>Hordeum vulgare</i> , <i>Cucumis</i>

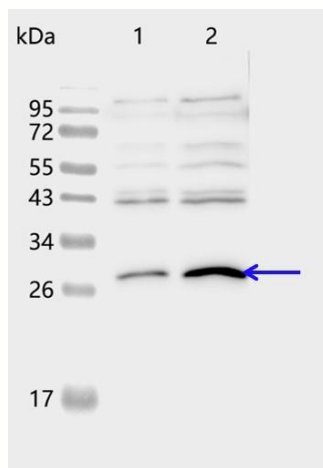
Research Use Only

sativus.

The sequence of the synthetic peptide used for immunization is 87% (13/15) homologues with the sequence in VHA-E3 (AT1G64200).

For more species homologues information, please contact tech support at tech@phytoab.com.

Application Example



PHY0078A

Lane 1: 15 µg total protein from *Arabidopsis thaliana*.

Lane 2: 30 µg total protein from *Arabidopsis thaliana*.

Electrophoresis: 15% SDS-PAGE

Transfer: blotting to NC (nitrocellulose) membrane for 1 h.

Blocking: 5% skim milk at RT or 4°C for 1 h.

Primary antibody: 1:2000 dilution overnight at 4°C.

Secondary antibody: 1:10000 dilution using Goat Anti-Rabbit IgG H&L(HRP) (Cat# PHY6000).

Detection: using chemiluminescence substrate and image were captured with CCD camera.