

Anti-Cytochrome c oxidase subunit COX3, mitochondrial antibody

Catalog: PHY1125S

Product Information

Description:	Rabbit polyclonal antibody
Background:	Cytochrome c oxidase is the last enzyme in the respiratory electron transport chain of mitochondria and it is also called Complex IV. Cytochrome c oxidase receives an electron from each of four cytochrome c molecules, and transfers them to one oxygen molecule, converting molecular oxygen to two molecules of water. In higher plants mitochondria, Complex IV processes 14 subunits. COX3 (ATMG00730) is one subunit of the Complex IV.
Synonyms:	COX3, CYTOCHROME C OXIDASE SUBUNIT 3
Immunogen:	KLH-conjugated synthetic peptide of COX3 derived from <i>Arabidopsis thaliana</i> ATMG00730, AT2G07687.
Form:	Lyophilized
Quantity:	150 µg
Purification:	Serum Peptide affinity form antibody available upon request at info@phytoab.com .
Reconstitution:	Reconstitution with 150 µl of sterile water. "Note: please spin tube briefly prior to opening it to avoid any losses that might occur from lyophilized material adhering to the cap or sides of the tube".
Stability & Storage:	Use a manual defrost freezer and avoid repeated freeze-thaw cycles. 12 months from date of receipt, -20 to -70°C as supplied. 6 months, -20 to -70°C under sterile conditions after reconstitution. 1 month, 2 to 8°C under sterile conditions after reconstitution.
Shipping:	The product is shipped at 4°C. Upon receipt, store it immediately at the temperature recommended above.

Application Information

Recommended Dilution:	Western Blot (1:1000-1:2000) Note: Optimal dilutions/concentrations should be determined by the end user.
Expected/apparent MW:	30 / 26 kDa

Research Use Only

Confirmed Reactivity:

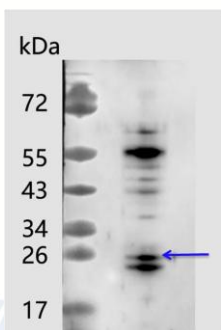
Arabidopsis thaliana

Predicted Reactivity:

Among 25 analyzed species, the sequence of the synthetic peptide used for immunization is 100% homologues with the sequence in *Medicago truncatula*, *Brassica napus*, *Glycine max*, *Populus trichocarpa*, *Cucumis sativus*, *Gossypium raimondii*, *Brassica rapa subsp. oleifera*, and 80-99% homologues with the sequence in *Hordeum vulgare subsp. vulgare*, *Hordeum vulgare subsp. vulgare*, *Oryza sativa Japonica Group*, *Vitis vinifera*, *Triticum aestivum*, *Zea mays subsp. mays*.

For more species homologues information, please contact tech support at tech@phytoab.com.

Application Example



7.5 μ g mitochondria protein from *Arabidopsis thaliana* leaf.

Electrophoresis: 15% SDS-Urea-PAGE

Transfer: blotting to NC (nitrocellulose) membrane for 1 h.

Blocking: 5% skim milk at RT or 4°C for 1 h.

Primary antibody: 1:1000 dilution overnight at 4°C.

Secondary antibody: 1:10000 dilution using Goat Anti-Rabbit IgG H&L(HRP)

PHY1125S (Cat# PHY6000).

Detection: using chemiluminescence substrate and image were captured with CCD camera.