

Anti-Histone H1-3 antibody

Catalog: PHY1206S

Product Information

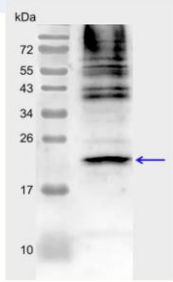
Description:	Rabbit polyclonal antibody
Background:	His1-3 is a structurally divergent linker histone whose gene expression is induced by dehydration and ABA. It is involved in nucleosome assembly and response to water deprivation.
Synonyms:	His1-3, HIS1-3, HISTONE H1-3
Immunogen:	KLH-conjugated synthetic peptide derived from C-terminal section of His1-3 protein in <i>Arabidopsis thaliana</i> AT2G18050.
Form:	Lyophilized
Quantity:	150 µg
Purification:	Serum Peptide affinity form antibody available upon request at info@phytoab.com .
Reconstitution:	Reconstitution with 150µl of sterile water. "Note: please spin tube briefly prior to opening it to avoid any losses that might occur from lyophilized material adhering to the cap or sides of the tube".
Stability & Storage:	Use a manual defrost freezer and avoid repeated freeze-thaw cycles. 12 months from date of receipt, -20 to -70°C as supplied. 6 months, -20 to -70°C under sterile conditions after reconstitution. 1 month, 2 to 8°C under sterile conditions after reconstitution.
Shipping:	The product is shipped at 4°C. Upon receipt, store it immediately at the temperature recommended above.

Application Information

Recommended Dilution:	Western Blot (1:1000-1:2000) Note: Optimal dilutions/concentrations should be determined by the end user.
Expected/apparent MW:	19 / 24 kDa
Confirmed Reactivity:	<i>Arabidopsis thaliana</i>
Predicted Reactivity:	For more species homologues information, please contact tech support at tech@phytoab.com .

Research Use Only

Application Example



6 μ g nuclear protein from *Arabidopsis thaliana*.

Electrophoresis: 15% SDS-PAGE

Transfer: blotting to NC (nitrocellulose) membrane for 1 h.

Blocking: 5% skim milk at RT or 4°C for 1 h.

Primary antibody: 1:1000 dilution overnight at 4°C.

PHY1206S Secondary antibody: 1:10000 dilution using Goat Anti-Rabbit IgG H&L(HRP) (Cat# PHY6000).

Detection: using chemiluminescence substrate and image were captured with CCD camera.